

Anti-WDSUB1 antibody

Cat. No.	ml163185
Package	25 µl/100 µl/200 µl
Storage	-20°C, pH7.4 PBS, 0.05% NaN ₃ , 40% Glycerol

Product overview

Description	Anti-WDSUB1 rabbit polyclonal antibody
Applications	ELISA, WB
Immunogen	Synthetic peptide of human WDSUB1
Reactivity	Human, Mouse
Content	0.7 mg/ml
Host species	Rabbit
Ig class	Immunogen-specific rabbit IgG
Purification	Antigen affinity purification

Target information

Symbol	WDSUB1
Full name	WD repeat, sterile alpha motif and U-box domain containing 1
Synonyms	UBOX6; WDSAM1
Swissprot	Q8N9V3

Target Background

WDSUB1 (WD repeat, SAM and U-box domain-containing protein 1), also known as UBOX6 or WDSAM1, is a 476 amino acid protein that contains one SAM (sterile alpha motif) domain, one U-box domain and seven WD repeats. Existing as two isoforms due to alternative splicing, WDSUB1 is encoded by a gene located on chromosome 2. The second largest human chromosome, chromosome 2 encodes over 1,400 genes and comprises nearly 8% of the human genome, housing a number of disease-associated genes. Harlequin ichthyosis, a rare and morbid skin deformity, is associated with mutations in the ABCA12 gene, while the lipid metabolic disorder sitosterolemia is associated with defects in the ABCG5 and ABCG8 genes. Additionally, an extremely rare recessive genetic disorder, Alström syndrome, is caused by mutations in the ALMS1 gene, which maps to chromosome 2.

订购热线: 4008-898-798

Applications

Western blotting

Predicted band size: 53 kDa

Positive control: 293T, NIH/3T3 and K562 cell lysates

Recommended dilution: 500-2000

Gel: 8%SDS-PAGE

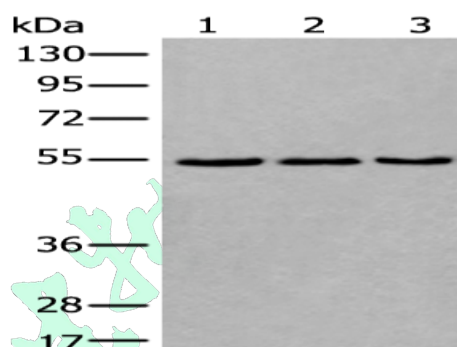
Lysate: 40 µg

Lane 1-3: 293T, NIH/3T3 and K562 cell lysates

Primary antibody: ml163185(WDSUB1 Antibody) at dilution 1/500

Secondary antibody: Goat anti rabbit IgG at 1/8000 dilution

Exposure time: 5 seconds



ELISA

Recommended dilution: 5000-10000

联系电话: 4008-898-798, 021-61725725

联系QQ: 2881505695, 2881505696

邮箱: mlbio_cn@yeah.net

网址: www.mlbio.cn