

Anti-FOXC1 antibody

Cat. No.	ml160347
Package	25 µl/100 µl/200 µl
Storage	-20°C, pH7.4 PBS, 0.05% NaN ₃ , 40% Glycerol

Product overview

Description	Anti-FOXC1 rabbit polyclonal antibody
Applications	ELISA, WB
Immunogen	Synthetic peptide of human FOXC1
Reactivity	Human, Mouse
Content	0.1 mg/ml
Host species	Rabbit
Ig class	Immunogen-specific rabbit IgG
Purification	Antigen affinity purification

Target information

Symbol	FOXC1
Full name	forkhead box C1
Synonyms	ARA; IGDA; IHG1; FKHL7; IRID1; RIEG3; FREAC3; FREAC-3
Swissprot	Q12948

Target Background

This gene belongs to the forkhead family of transcription factors which is characterized by a distinct DNA-binding forkhead domain. The specific function of this gene has not yet been determined; however, it has been shown to play a role in the regulation of embryonic and ocular development. Mutations in this gene cause various glaucoma phenotypes including primary congenital glaucoma, autosomal dominant iridogoniodysgenesis anomaly, and Axenfeld-Rieger anomaly.

订购热线: 4008-898-798

Applications

Western blotting

Predicted band size: 57 kDa

Positive control: Human normal liver tissue

Recommended dilution: 500-2000

Gel: 8%SDS-PAGE

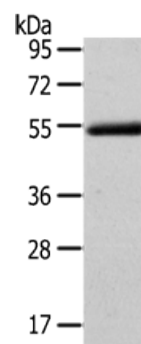
Lysate: 40 µg

Lane: Human normal liver tissue

Primary antibody: ml160347(FOXC1 Antibody) at dilution 1/400

Secondary antibody: Goat anti rabbit IgG at 1/8000 dilution

Exposure time: 3 minutes



ELISA

Recommended dilution: 2000-5000

联系电话: 4008-898-798, 021-61725725

联系QQ: 2881505695, 2881505696

邮箱: mlbio_cn@yeah.net

网址: www.mlbio.cn