

## Anti-TPM2 antibody

|                 |   |
|-----------------|---|
| <b>Cat. No.</b> | ml160374  |
| <b>Package</b>  | 25 µl/100 µl/200 µl                                     |
| <b>Storage</b>  | -20°C, pH7.4 PBS, 0.05% NaN <sub>3</sub> , 40% Glycerol |

### Product overview

|                     |                                      |
|---------------------|--------------------------------------|
| <b>Description</b>  | Anti-TPM2 rabbit polyclonal antibody |
| <b>Applications</b> | ELISA, WB, IHC                       |
| <b>Immunogen</b>    | Synthetic peptide of human TPM2      |
| <b>Reactivity</b>   | Human                                |
| <b>Content</b>      | 0.4 mg/ml                            |
| <b>Host species</b> | Rabbit                               |
| <b>Ig class</b>     | Immunogen-specific rabbit IgG        |
| <b>Purification</b> | Antigen affinity purification        |

### Target information

|                  |                              |
|------------------|------------------------------|
| <b>Symbol</b>    | TPM2                         |
| <b>Full name</b> | tropomyosin 2 (beta)         |
| <b>Synonyms</b>  | DA1, DA2B, NEM4, TMSB, AMCD1 |
| <b>Swissprot</b> | P07951                       |

### Target Background

This gene encodes beta-tropomyosin, a member of the actin filament binding protein family, and mainly expressed in slow, type 1 muscle fibers. Mutations in this gene can alter the expression of other sarcomeric tropomyosin proteins, and cause cap disease, nemaline myopathy and distal arthrogryposis syndromes. Alternatively spliced transcript variants encoding different isoforms have been found for this gene. TPM2 has been shown to interact with RRAD, PDLIM7 and TPM1.

订购热线: 4008-898-798

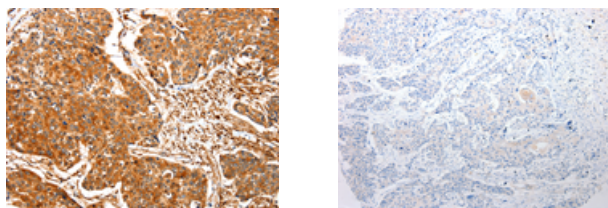
#### Applications

##### Immunohistochemistry

Predicted cell location: Cytoplasm

Positive control: Human esophagus cancer

Recommended dilution: 50-200



The image on the left is immunohistochemistry of paraffin-embedded Human esophagus cancer tissue using ml160374(TPM2 Antibody) at dilution 1/30, on the right is treated with synthetic peptide. (Original magnification:  $\times 200$ )

##### Western blotting

Predicted band size: 33 kDa

Positive control: Human cervical cancer tissue

Recommended dilution: 500-2000

Gel: 10% SDS-PAGE

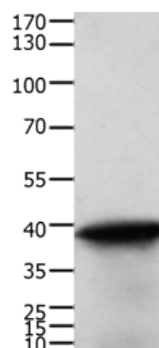
Lysate: 40  $\mu$ g

Lane: Human cervical cancer tissue

Primary antibody: ml160374(TPM2 Antibody) at dilution 1/600

Secondary antibody: Goat anti rabbit IgG at 1/8000 dilution

Exposure time: 2 minutes



##### ELISA

Recommended dilution: 1000-5000

联系电话: 4008-898-798, 021-61725725

联系QQ: 2881505695, 2881505696

邮箱: [mlbio\\_cn@yeah.net](mailto:mlbio_cn@yeah.net)

网址: [www.mlbio.cn](http://www.mlbio.cn)