

Anti-CMTM6 antibody

Cat. No.	ml160396
Package	25 µl/100 µl/200 µl
Storage	-20°C, pH7.4 PBS, 0.05% NaN ₃ , 40% Glycerol

Product overview

Description	Anti-CMTM6 rabbit polyclonal antibody
Applications	ELISA, WB, IHC
Immunogen	Synthetic peptide of human CMTM6
Reactivity	Human
Content	0.7 mg/ml
Host species	Rabbit
Ig class	Immunogen-specific rabbit IgG
Purification	Antigen affinity purification

Target information

Symbol	CMTM6
Full name	CKLF-like MARVEL transmembrane domain containing 6
Synonyms	CKLFSF6, PRO2219
Swissprot	Q9NX76

Target Background

This gene belongs to the chemokine-like factor gene superfamily, a novel family that is similar to the chemokine and transmembrane 4 superfamilies. This gene is one of several chemokine-like factor genes located in a cluster on chromosome 3. This gene is widely expressed in many tissues, but the exact function of the encoded protein is unknown.

订购热线: 4008-898-798

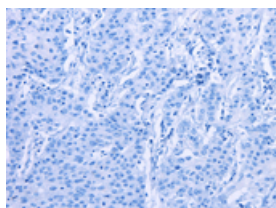
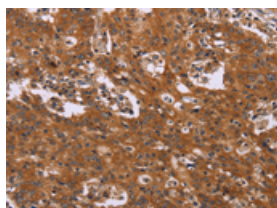
Applications

Immunohistochemistry

Predicted cell location: Cytoplasm

Positive control: Human gastric cancer

Recommended dilution: 50-200

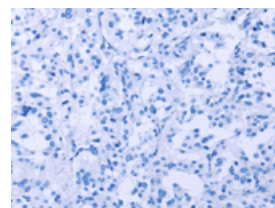
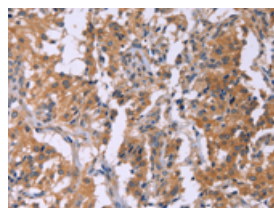


The image on the left is immunohistochemistry of paraffin-embedded Human gastric cancer tissue using ml160396(CMTM6 Antibody) at dilution 1/40, on the right is treated with synthetic peptide. (Original magnification: $\times 200$)

Predicted cell location: Cytoplasm

Positive control: Human thyroid cancer

Recommended dilution: 50-200



The image on the left is immunohistochemistry of paraffin-embedded Human thyroid cancer tissue using ml160396(CMTM6 Antibody) at dilution 1/40, on the right is treated with synthetic peptide. (Original magnification: $\times 200$)

Western blotting

Predicted band size: 20 kDa

Positive control: Human placenta and testis tissue, Hela and Raji cells

Recommended dilution: 500-2000

Gel: 10% SDS-PAGE

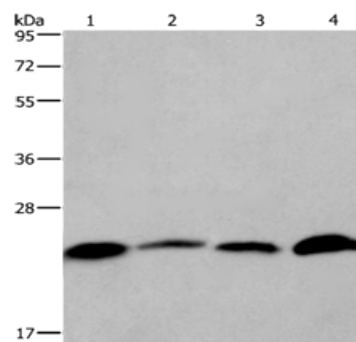
Lysate: 40 μ g

Lane 1-4: Human placenta tissue, Human testis tissue, Hela cells, Raji cells

Primary antibody: ml160396(CMTM6 Antibody) at dilution 1/700

Secondary antibody: Goat anti rabbit IgG at 1/8000 dilution

Exposure time: 3 minutes



ELISA

Recommended dilution: 2000-5000

联系电话: 4008-898-798, 021-61725725

联系QQ: 2881505695, 2881505696

邮箱: mlbio_cn@yeah.net

网址: www.mlbio.cn