

Anti-CYP2W1 antibody

Cat. No.	ml122178
Package	25 µl/100 µl/200 µl
Storage	-20°C, pH7.4 PBS, 0.05% NaN ₃ , 40% Glycerol

Product overview

Description	Anti-CYP2W1 rabbit polyclonal antibody
Applications	ELISA, IHC
Immunogen	Fusion protein of human CYP2W1
Reactivity	Human, Mouse
Content	0.4 mg/ml
Host species	Rabbit
Ig class	Immunogen-specific rabbit IgG
Purification	Antigen affinity purification

Target information

Symbol	CYP2W1
Full name	cytochrome P450, family 2, subfamily W, polypeptide 1
Synonyms	
Swissprot	Q8TAV3

Target Background

This gene encodes a member of the cytochrome P450 superfamily of enzymes. The cytochrome P450 proteins are monooxygenases which catalyze many reactions involved in drug metabolism and synthesis of cholesterol, steroids and other lipids.

订购热线: 4008-898-798

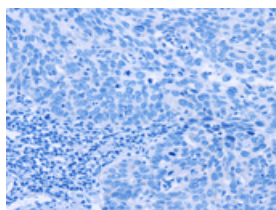
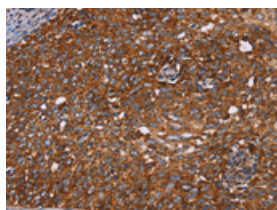
Applications

Immunohistochemistry

Predicted cell location: Cytoplasm

Positive control: Human cervical cancer

Recommended dilution: 100-300

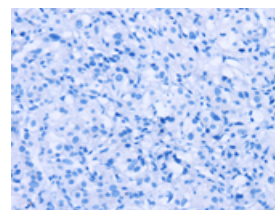
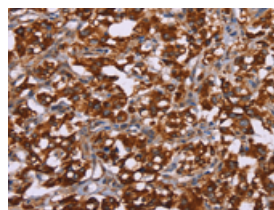


The image on the left is immunohistochemistry of paraffin-embedded Human cervical cancer tissue using ml122178(CYP2W1 Antibody) at dilution 1/60, on the right is treated with fusion protein. (Original magnification: $\times 200$)

Predicted cell location: Cytoplasm

Positive control: Human thyroid cancer

Recommended dilution: 100-300



The image on the left is immunohistochemistry of paraffin-embedded Human thyroid cancer tissue using ml122178(CYP2W1 Antibody) at dilution 1/60, on the right is treated with fusion protein. (Original magnification: $\times 200$)

ELISA

Recommended dilution: 2000-10000

联系电话: 4008-898-798, 021-61725725

联系QQ: 2881505695, 2881505696

邮箱: mlbio_cn@yeah.net

网址: www.mlbio.cn