

Anti-GDF1 antibody

Cat. No.	ml160419
Package	25 µl/100 µl/200 µl
Storage	-20°C, pH7.4 PBS, 0.05% NaN ₃ , 40% Glycerol

Product overview

Description	Anti-GDF1 rabbit polyclonal antibody
Applications	ELISA, WB
Immunogen	Synthetic peptide of human GDF1
Reactivity	Human, Mouse
Content	0.3 mg/ml
Host species	Rabbit
Ig class	Immunogen-specific rabbit IgG
Purification	Antigen affinity purification

Target information

Symbol	GDF1
Full name	Growth differentiation factor 1
Synonyms	DORV, DTGA3
Swissprot	P27539

Target Background

This gene encodes a member of the bone morphogenetic protein (BMP) family and the TGF-beta superfamily. This group of proteins is characterized by a polybasic proteolytic processing site that is cleaved to produce a mature protein containing seven conserved cysteine residues. The members of this family are regulators of cell growth and differentiation in both embryonic and adult tissues. Studies in rodents suggest that this protein is involved in the establishment of left-right asymmetry in early embryogenesis and in neural development in later embryogenesis. This protein is transcribed from a bicistronic mRNA that also encodes the longevity assurance gene.

订购热线: 4008-898-798

Applications

Western blotting

Predicted band size: 39 kDa

Positive control: Mouse brain tissue

Recommended dilution: 200-1000

Gel: 10% SDS-PAGE

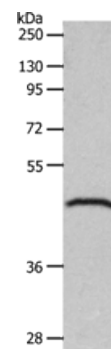
Lysate: 40 µg

Lane: Mouse brain tissue

Primary antibody: ml160419(GDF1 Antibody) at dilution 1/200

Secondary antibody: Goat anti rabbit IgG at 1/8000 dilution

Exposure time: 1 minute



ELISA

Recommended dilution: 1000-2000

联系电话: 4008-898-798, 021-61725725

联系QQ: 2881505695, 2881505696

邮箱: mlbio_cn@yeah.net

网址: www.mlbio.cn