

Anti-SLC2A3 antibody

Cat. No.	ml160435
Package	25 µl/100 µl/200 µl
Storage	-20°C, pH7.4 PBS, 0.05% NaN ₃ , 40% Glycerol

Product overview

Description	Anti-SLC2A3 rabbit polyclonal antibody
Applications	ELISA, WB, IHC
Immunogen	Synthetic peptide of human SLC2A3
Reactivity	Human
Content	0.6 mg/ml
Host species	Rabbit
Ig class	Immunogen-specific rabbit IgG
Purification	Antigen affinity purification

Target information

Symbol	SLC2A3
Full name	solute carrier family 2 member 3
Synonyms	GLUT3
Swissprot	P11169

Target Background

Facilitative glucose transporter that can also mediate the uptake of various other monosaccharides across the cell membrane (PubMed:9477959, PubMed:26176916). Mediates the uptake of glucose, 2-deoxyglucose, galactose, mannose, xylose and fucose, and probably also dehydroascorbate (PubMed:9477959, PubMed:26176916). Does not mediate fructose transport (PubMed:9477959, PubMed:26176916).

订购热线: 4008-898-798

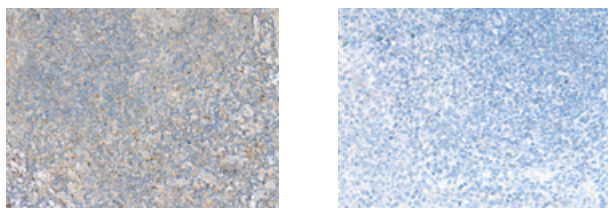
Applications

Immunohistochemistry

Predicted cell location: Cytoplasm and Cell membrane

Positive control: Human tonsil

Recommended dilution: 10-50



The image on the left is immunohistochemistry of paraffin-embedded Human tonsil tissue using ml160435(SLC2A3 Antibody) at dilution 1/20, on the right is treated with synthetic peptide. (Original magnification: $\times 200$)

Western blotting

Predicted band size: 54 kDa

Positive control: Human colorectal cancer tissue lysate

Recommended dilution: 200-1000

Gel: 8%SDS-PAGE

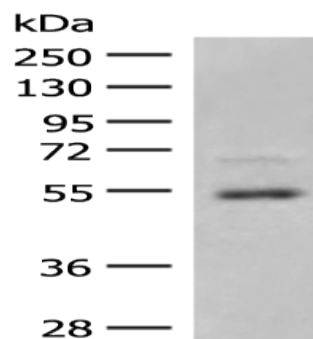
Lysate: 40 μ g

Lane: Human colorectal cancer tissue lysate

Primary antibody: ml160435(SLC2A3 Antibody) at dilution 1/200

Secondary antibody: Goat anti rabbit IgG at 1/8000 dilution

Exposure time: 5 minutes



ELISA

Recommended dilution: 5000-10000

联系电话: 4008-898-798, 021-61725725

联系QQ: 2881505695, 2881505696

邮箱: mlbio_cn@yeah.net

网址: www.mlbio.cn