

## Anti-CSF2RA antibody

<b>Cat. No.</b>	ml160442
<b>Package</b>	25 µl/100 µl/200 µl
<b>Storage</b>	-20°C, pH7.4 PBS, 0.05% NaN <sub>3</sub> , 40% Glycerol

### Product overview

<b>Description</b>	Anti-CSF2RA rabbit polyclonal antibody
<b>Applications</b>	ELISA, WB
<b>Immunogen</b>	Synthetic peptide of human CSF2RA
<b>Reactivity</b>	Human, Mouse
<b>Content</b>	0.3 mg/ml
<b>Host species</b>	Rabbit
<b>Ig class</b>	Immunogen-specific rabbit IgG
<b>Purification</b>	Antigen affinity purification

### Target information

<b>Symbol</b>	CSF2RA
<b>Full name</b>	colony stimulating factor 2 receptor, alpha, low-affinity (granulocyte-macrophage)
<b>Synonyms</b>	GMR, CD116, CSF2R, SMDP4, CDw116, CSF2RX, CSF2RY, GMCSFR, CSF2RAX, CSF2RAY, GM-CSF-R-alpha
<b>Swissprot</b>	P15509

### Target Background

The protein encoded by this gene is the alpha subunit of the heterodimeric receptor for colony stimulating factor 2, a cytokine which controls the production, differentiation, and function of granulocytes and macrophages. The encoded protein is a member of the cytokine family of receptors. This gene is found in the pseudoautosomal region (PAR) of the X and Y chromosomes. Multiple transcript variants encoding different isoforms have been found for this gene, with some of the isoforms being membrane-bound and others being soluble.

订购热线: 4008-898-798

#### Applications

##### Western blotting

Predicted band size: 50 kDa

Positive control: Mouse heart tissue

Recommended dilution: 500-2000

Gel: 10+12% SDS-PAGE

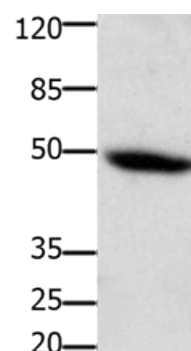
Lysate: 30 µg

Lane: Mouse heart tissue

Primary antibody: ml160442(CSF2RA Antibody) at dilution 1/400

Secondary antibody: Goat anti rabbit IgG at 1/8000 dilution

Exposure time: 5 minutes



##### ELISA

Recommended dilution: 1000-5000

联系电话: 4008-898-798, 021-61725725

联系QQ: 2881505695, 2881505696

邮箱: [mlbio\\_cn@yeah.net](mailto:mlbio_cn@yeah.net)

网址: [www.mlbio.cn](http://www.mlbio.cn)