

Anti-GPR6 antibody

Cat. No.	ml160453
Package	25 µl/100 µl/200 µl
Storage	-20°C, pH7.4 PBS, 0.05% NaN ₃ , 40% Glycerol

Product overview

Description	Anti-GPR6 rabbit polyclonal antibody
Applications	ELISA, WB
Immunogen	Synthetic peptide of human GPR6
Reactivity	Human, Mouse, Rat
Content	0.2 mg/ml
Host species	Rabbit
Ig class	Immunogen-specific rabbit IgG
Purification	Antigen affinity purification

Target information

Symbol	GPR6
Full name	G protein-coupled receptor 6
Synonyms	
Swissprot	P46095

Target Background

G protein-coupled receptor 6, also known as GPR6, is a protein which in humans is encoded by the GPR6 gene. GPR6 is a member of the G protein-coupled receptor family of transmembrane receptors. It has been reported that GPR6 is both constitutively active but in addition is further activated by sphingosine-1-phosphate. GPR6 up-regulates cyclic AMP levels and promotes neurite outgrowth.

订购热线: 4008-898-798

Applications

Western blotting

Predicted band size: 38 kDa

Positive control: Mouse intestine tissue

Recommended dilution: 200-1000

Gel: 10% SDS-PAGE

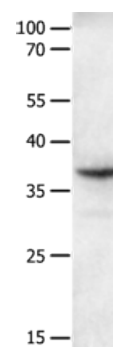
Lysate: 40 µg

Lane: Mouse intestine tissue

Primary antibody: ml160453(GPR6 Antibody) at dilution 1/250

Secondary antibody: Goat anti rabbit IgG at 1/8000 dilution

Exposure time: 2 minutes



ELISA

Recommended dilution: 1000-5000

联系电话: 4008-898-798, 021-61725725

联系QQ: 2881505695, 2881505696

邮箱: mlbio_cn@yeah.net

网址: www.mlbio.cn