

Anti-GCH1 antibody

Cat. No.	ml160469
Package	25 µl/100 µl/200 µl
Storage	-20°C, pH7.4 PBS, 0.05% NaN ₃ , 40% Glycerol

Product overview

Description	Anti-GCH1 rabbit polyclonal antibody
Applications	ELISA, WB, IHC
Immunogen	Synthetic peptide of human GCH1
Reactivity	Human
Content	0.3 mg/ml
Host species	Rabbit
Ig class	Immunogen-specific rabbit IgG
Purification	Antigen affinity purification

Target information

Symbol	GCH1
Full name	GTP cyclohydrolase 1
Synonyms	GCH, DYT5, DYT14, DYT5a, GTPCH1, HPABH4B, GTP-CH-1
Swissprot	P30793

Target Background

This gene encodes a member of the GTP cyclohydrolase family. The encoded protein is the first and rate-limiting enzyme in tetrahydrobiopterin (BH₄) biosynthesis, catalyzing the conversion of GTP into 7,8-dihydroneopterin triphosphate. BH₄ is an essential cofactor required by aromatic amino acid hydroxylases as well as nitric oxide synthases. Mutations in this gene are associated with malignant hyperphenylalaninemia and dopa-responsive dystonia. Several alternatively spliced transcript variants encoding different isoforms have been described; however, not all variants give rise to a functional enzyme.

订购热线: 4008-898-798

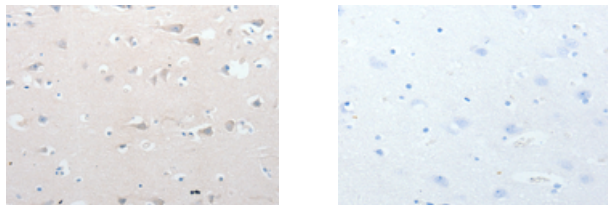
Applications

Immunohistochemistry

Predicted cell location: Cytoplasm

Positive control: Human brain

Recommended dilution: 5-20



The image on the left is immunohistochemistry of paraffin-embedded Human brain tissue using ml160469(GCH1 Antibody) at dilution 1/15, on the right is treated with synthetic peptide. (Original magnification: $\times 200$)

Western blotting

Predicted band size: 28 kDa

Positive control: Human fetal liver tissue and hela cells

Recommended dilution: 200-1000

Gel: 12% SDS-PAGE

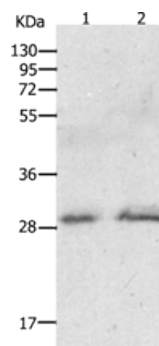
Lysate: 60 μ g

Lane 1-2: Human fetal liver tissue, hela cells

Primary antibody: ml160469(GCH1 Antibody) at dilution 1/200

Secondary antibody: Goat anti rabbit IgG at 1/8000 dilution

Exposure time: 15 minutes



ELISA

Recommended dilution: 1000-2000

联系电话: 4008-898-798, 021-61725725

联系QQ: 2881505695, 2881505696

邮箱: mlbio_cn@yeah.net

网址: www.mlbio.cn