

Anti-KCNH2 antibody

Cat. No.	ml160470
Package	25 µl/100 µl/200 µl
Storage	-20°C, pH7.4 PBS, 0.05% NaN ₃ , 40% Glycerol

Product overview

Description	Anti-KCNH2 rabbit polyclonal antibody
Applications	ELISA, WB
Immunogen	Synthetic peptide of human KCNH2
Reactivity	Human, Mouse, Rat
Content	0.2 mg/ml
Host species	Rabbit
Ig class	Immunogen-specific rabbit IgG
Purification	Antigen affinity purification

Target information

Symbol	KCNH2
Full name	potassium voltage-gated channel, subfamily H (eag-related), member 2
Synonyms	ERG1, HERG, LQT2, SQT1, HERG1, Kv11.1
Swissprot	Q12809

Target Background

This gene encodes a voltage-activated potassium channel belonging to the eag family. It shares sequence similarity with the *Drosophila* ether-a-go-go (*eag*) gene. Mutations in this gene can cause long QT syndrome type 2 (LQT2). Transcript variants encoding distinct isoforms have been identified. Pore-forming (alpha) subunit of voltage-gated inwardly rectifying potassium channel. Channel properties are modulated by cAMP and subunit assembly. Mediates the rapidly activating component of the delayed rectifying potassium current in heart (IKr). Isoform 3 has no channel activity by itself, but modulates channel characteristics when associated with isoform 1.

订购热线: 4008-898-798

Applications

Western blotting

Predicted band size: 90 kDa

Positive control: Mouse brain tissue

Recommended dilution: 500-2000

Gel: 8%SDS-PAGE

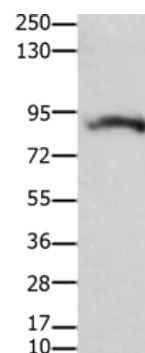
Lysate: 30 µg

Lane: Mouse brain tissue

Primary antibody: ml160470(KCNH2 Antibody) at dilution 1/100

Secondary antibody: Goat anti rabbit IgG at 1/8000 dilution

Exposure time: 5 minutes



ELISA

Recommended dilution: 1000-5000

联系电话: 4008-898-798, 021-61725725

联系QQ: 2881505695, 2881505696

邮箱: mlbio_cn@yeah.net

网址: www.mlbio.cn