

Anti-CECR5 antibody

Cat. No.	ml163423
Package	25 µl/100 µl/200 µl
Storage	-20°C, pH7.4 PBS, 0.05% NaN ₃ , 40% Glycerol

Product overview

Description	Anti-CECR5 rabbit polyclonal antibody
Applications	ELISA, WB
Immunogen	Synthetic peptide of human CECR5
Reactivity	Human
Content	1.3 mg/ml
Host species	Rabbit
Ig class	Immunogen-specific rabbit IgG
Purification	Antigen affinity purification

Target information

Symbol	CECR5
Full name	cat eye syndrome chromosome region, candidate 5
Synonyms	
Swissprot	Q9BXW7

Target Background

Adenosine deaminase is an enzyme that is present in most tissues and exists predominantly as a monomer, although in some tissues it is associated with adenosine deaminase-binding protein. Adenosine deaminase degrades extracellular adenosine, which is toxic for lymphocytes. A novel family of growth factors that share sequence similarity to adenosine deaminase has been identified. The cat eye syndrome critical region protein (CECR) family includes CECR1, CECR2, CECR3, CECR4, CECR5, CECR6, CECR7, CECR8 and CECR9. The genes encoding CECR proteins are candidates for Cat Eye Syndrome (CES), a developmental disorder associated with the duplication of a 2 Mb region of 22q11.2. CES is characterized by the combination of coloboma of the iris and anal atresia with fistula, downslanting palpebral fissures, preauricular tags and/or pits, frequent occurrence of heart and renal malformations, and normal or near-normal mental development. CECR family members are widely expressed. Specifically, CECR1 has the highest expression in adult heart, lung, lymphoblasts and placenta. CECR2 is also involved in neurulation and chromatin remodeling. Mutations in the CECR2 gene result in neural tube defects.

订购热线: 4008-898-798

Applications

Western blotting

Predicted band size: 46 kDa

Positive control: Jurkat, HEPG2 and Hela cell, Human testis tissue, 231 cell lysates

Recommended dilution: 500-2000

Gel: 8% SDS-PAGE

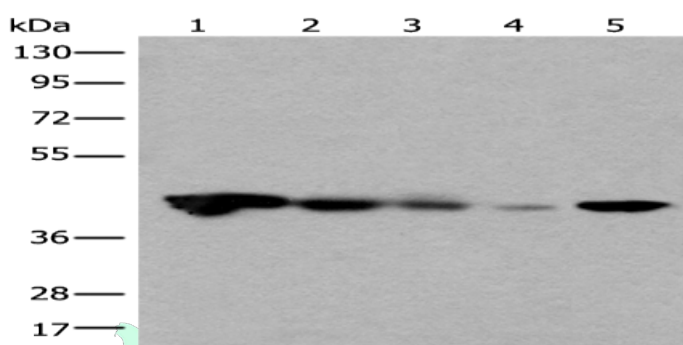
Lysate: 40 μ g

Lane 1-5: Jurkat, HEPG2 and Hela cell, Human testis tissue, 231 cell lysates

Primary antibody: ml163423 (CECR5 Antibody) at dilution 1/650

Secondary antibody: Goat anti rabbit IgG at 1/8000 dilution

Exposure time: 5 seconds



ELISA

Recommended dilution: 5000-10000

联系电话: 4008-898-798, 021-61725725

联系QQ: 2881505695, 2881505696

邮箱: mlbio_cn@yeah.net

网址: www.mlbio.cn