

Anti-IL2RA antibody

Cat. No.	ml160512
Package	25 µl/100 µl/200 µl
Storage	-20°C, pH7.4 PBS, 0.05% NaN ₃ , 40% Glycerol

Product overview

Description	Anti-IL2RA rabbit polyclonal antibody
Applications	ELISA, WB
Immunogen	Synthetic peptide of human IL2RA
Reactivity	Human, Mouse, Rat
Content	0.3 mg/ml
Host species	Rabbit
Ig class	Immunogen-specific rabbit IgG
Purification	Antigen affinity purification

Target information

Symbol	IL2RA
Full name	interleukin 2 receptor, alpha
Synonyms	CD25, IL2R, TCGFR, IDDM10
Swissprot	P01589

Target Background

The interleukin 2 (IL2) receptor alpha (IL2RA) and beta (IL2RB) chains, together with the common gamma chain (IL2RG), constitute the high-affinity IL2 receptor. Homodimeric alpha chains (IL2RA) result in low-affinity receptor, while homodimeric beta (IL2RB) chains produce a medium-affinity receptor. Normally an integral-membrane protein, soluble IL2RA has been isolated and determined to result from extracellular proteolysis. Alternately-spliced IL2RA mRNAs have been isolated, but the significance of each is presently unknown. Mutations in this gene are associated with interleukin 2 receptor alpha deficiency.

订购热线: 4008-898-798

Applications

Western blotting

Predicted band size: 31 kDa

Positive control: A549 cells

Recommended dilution: 200-1000

Gel: 10+12% SDS-PAGE

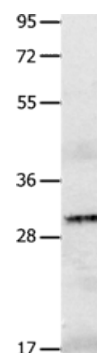
Lysate: 40 µg

Lane: A549 cells

Primary antibody: ml160512(IL2RA Antibody) at dilution 1/750

Secondary antibody: Goat anti rabbit IgG at 1/8000 dilution

Exposure time: 1 second



ELISA

Recommended dilution: 1000-5000

联系电话: 4008-898-798, 021-61725725

联系QQ: 2881505695, 2881505696

邮箱: mlbio_cn@yeah.net

网址: www.mlbio.cn