

## Anti-IRF7 antibody

<b>Cat. No.</b>	ml160521
<b>Package</b>	25 µl/100 µl/200 µl
<b>Storage</b>	-20°C, pH7.4 PBS, 0.05% NaN <sub>3</sub> , 40% Glycerol

### Product overview

<b>Description</b>	Anti-IRF7 rabbit polyclonal antibody
<b>Applications</b>	ELISA, WB, IHC
<b>Immunogen</b>	Synthetic peptide of human IRF7
<b>Reactivity</b>	Human, Mouse
<b>Content</b>	0.8 mg/ml
<b>Host species</b>	Rabbit
<b>Ig class</b>	Immunogen-specific rabbit IgG
<b>Purification</b>	Antigen affinity purification

### Target information

<b>Symbol</b>	IRF7
<b>Full name</b>	interferon regulatory factor 7
<b>Synonyms</b>	IMD39; IRF7A; IRF7B; IRF7C; IRF7H; IRF-7H
<b>Swissprot</b>	Q92985

### Target Background

IRF7 encodes interferon regulatory factor 7, a member of the interferon regulatory transcription factor (IRF) family. IRF7 has been shown to play a role in the transcriptional activation of virus-inducible cellular genes, including interferon beta chain genes. Inducible expression of IRF7 is largely restricted to lymphoid tissue. Multiple IRF7 transcript variants have been identified, although the functional consequences of these have not yet been established.

订购热线: 4008-898-798

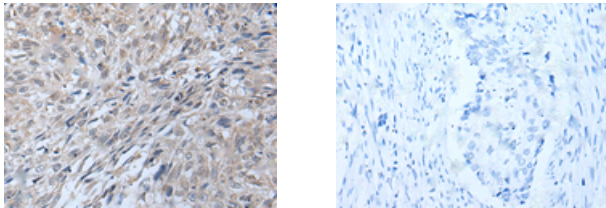
#### Applications

##### Immunohistochemistry

Predicted cell location: Nucleus and Cytoplasm

Positive control: Human lung cancer

Recommended dilution: 10-50



The image on the left is immunohistochemistry of paraffin-embedded Human lung cancer tissue using ml160521 (IRF7 Antibody) at dilution 1/25, on the right is treated with synthetic peptide. (Original magnification:  $\times 200$ )

##### Western blotting

Predicted band size: 54 kDa

Positive control: Jurkat cell lysate

Recommended dilution: 200-1000

Gel: 8% SDS-PAGE

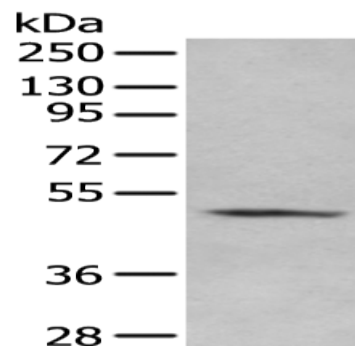
Lysate: 40  $\mu$ g

Lane: Jurkat cell lysate

Primary antibody: ml160521 (IRF7 Antibody) at dilution 1/400

Secondary antibody: Goat anti rabbit IgG at 1/8000 dilution

Exposure time: 60 seconds



##### ELISA

Recommended dilution: 5000-10000

联系电话: 4008-898-798, 021-61725725

联系QQ: 2881505695, 2881505696

邮箱: [mlbio\\_cn@yeah.net](mailto:mlbio_cn@yeah.net)

网址: [www.mlbio.cn](http://www.mlbio.cn)