

Anti-KLF5 antibody

Cat. No.	ml160534
Package	25 µl/100 µl/200 µl
Storage	-20°C, pH7.4 PBS, 0.05% NaN ₃ , 40% Glycerol

Product overview

Description	Anti-KLF5 rabbit polyclonal antibody
Applications	ELISA, WB, IHC
Immunogen	Synthetic peptide of human KLF5
Reactivity	Human, Mouse
Content	0.8 mg/ml
Host species	Rabbit
Ig class	Immunogen-specific rabbit IgG
Purification	Antigen affinity purification

Target information

Symbol	KLF5
Full name	Kruppel like factor 5
Synonyms	CKLF; IKLF; BTEB2
Swissprot	Q13887

Target Background

This gene encodes a member of the Kruppel-like factor subfamily of zinc finger proteins. The encoded protein is a transcriptional activator that binds directly to a specific recognition motif in the promoters of target genes. This protein acts downstream of multiple different signaling pathways and is regulated by post-translational modification. It may participate in both promoting and suppressing cell proliferation. Expression of this gene may be changed in a variety of different cancers and in cardiovascular disease. Alternative splicing results in multiple transcript variants.

订购热线: 4008-898-798

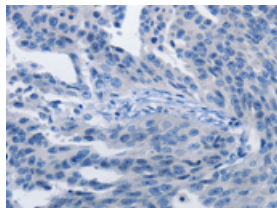
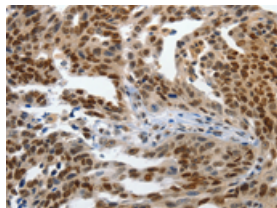
Applications

Immunohistochemistry

Predicted cell location: Cytoplasm, Nucleus

Positive control: Human ovarian cancer

Recommended dilution: 100-300

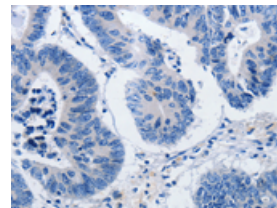
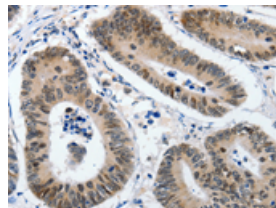


The image on the left is immunohistochemistry of paraffin-embedded Human ovarian cancer tissue using ml160534(KLF5 Antibody) at dilution 1/120, on the right is treated with synthetic peptide. (Original magnification: $\times 200$)

Predicted cell location: Cytoplasm, Nucleus

Positive control: Human colon cancer

Recommended dilution: 100-300



The image on the left is immunohistochemistry of paraffin-embedded Human colon cancer tissue using ml160534(KLF5 Antibody) at dilution 1/120, on the right is treated with synthetic peptide. (Original magnification: $\times 200$)

Western blotting

Predicted band size: 51 kDa

Positive control: Jurkat cells and human ovarian cancer tissue

Recommended dilution: 500-2000

Gel: 10+12+15% SDS-PAGE

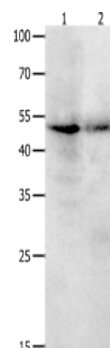
Lysate: 40 μ g

Lane 1-2: Jurkat cells, human ovarian cancer tissue

Primary antibody: ml160534(KLF5 Antibody) at dilution 1/1700

Secondary antibody: Goat anti rabbit IgG at 1/8000 dilution

Exposure time: 20 seconds



ELISA

Recommended dilution: 1000-5000

联系电话: 4008-898-798, 021-61725725

联系QQ: 2881505695, 2881505696

邮箱: mlbio_cn@yeah.net

网址: www.mlbio.cn