

Anti-LHB antibody

Cat. No.	ml160553
Package	25 µl/100 µl/200 µl
Storage	-20°C, pH7.4 PBS, 0.05% NaN ₃ , 40% Glycerol

Product overview

Description	Anti-LHB rabbit polyclonal antibody
Applications	ELISA, WB
Immunogen	Synthetic peptide of human LHB
Reactivity	Human
Content	0.5 mg/ml
Host species	Rabbit
Ig class	Immunogen-specific rabbit IgG
Purification	Antigen affinity purification

Target information

Symbol	LHB
Full name	Luteinizing hormone beta polypeptide
Synonyms	CGB4, hLHB, LSH-B
Swissprot	P01229

Target Background

This gene is a member of the glycoprotein hormone beta chain family and encodes the beta subunit of luteinizing hormone (LH). Glycoprotein hormones are heterodimers consisting of a common alpha subunit and an unique beta subunit which confers biological specificity. LH is expressed in the pituitary gland and promotes spermatogenesis and ovulation by stimulating the testes and ovaries to synthesize steroids. The genes for the beta chains of chorionic gonadotropin and for luteinizing hormone are contiguous on chromosome 19q13.3. Mutations in this gene are associated with hypogonadism which is characterized by infertility and pseudohermaphroditism.

订购热线: 4008-898-798

Applications

Western blotting

Predicted band size: 15 kDa

Positive control: 293T cells and Human fetal brain tissue

Recommended dilution: 500-2000

Gel: 10+12% SDS-PAGE

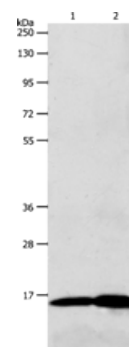
Lysate: 40 µg

Lane 1-2: 293T cells, Human fetal brain tissue

Primary antibody: ml160553 (LHB Antibody) at dilution 1/800

Secondary antibody: Goat anti rabbit IgG at 1/8000 dilution

Exposure time: 5 minutes



ELISA

Recommended dilution: 1000-5000

联系电话: 4008-898-798, 021-61725725

联系QQ: 2881505695, 2881505696

邮箱: mlbio_cn@yeah.net

网址: www.mlbio.cn