

Anti-MMP17 antibody

Cat. No.	ml160623
Package	25 µl/100 µl/200 µl
Storage	-20°C, pH7.4 PBS, 0.05% NaN ₃ , 40% Glycerol

Product overview

Description	Anti-MMP17 rabbit polyclonal antibody
Applications	ELISA, WB
Immunogen	Synthetic peptide of human MMP17
Reactivity	Human
Content	0.4 mg/ml
Host species	Rabbit
Ig class	Immunogen-specific rabbit IgG
Purification	Antigen affinity purification

Target information

Symbol	MMP17
Full name	matrix metalloproteinase 17 (membrane-inserted)
Synonyms	MT4-MMP
Swissprot	Q9ULZ9

Target Background

Proteins of the matrix metalloproteinase (MMP) family are involved in the breakdown of extracellular matrix in normal physiological processes, such as embryonic development, reproduction, and tissue remodeling, as well as in disease processes, such as arthritis and metastasis. Most MMP's are secreted as inactive proproteins which are activated when cleaved by extracellular proteinases. The protein encoded by this gene is considered a member of the membrane-type MMP (MT-MMP) subfamily. However, this protein is unique among the MT-MMP's in that it is a GPI-anchored protein rather than a transmembrane protein. The protein activates MMP-2 by cleavage.

订购热线: 4008-898-798

Applications

Western blotting

Predicted band size: 58 kDa

Positive control: K562 cells and human colon cancer tissue

Recommended dilution: 500-2000

Gel: 10+12% SDS-PAGE

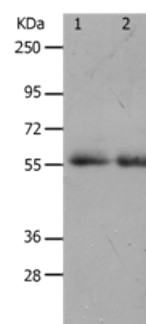
Lysate: 40 µg

Lane 1-2: K562 cells, human colon cancer tissue

Primary antibody: ml160623(MMP17 Antibody) at dilution 1/900

Secondary antibody: Goat anti rabbit IgG at 1/8000 dilution

Exposure time: 2 minutes



ELISA

Recommended dilution: 2000-5000

联系电话: 4008-898-798, 021-61725725

联系QQ: 2881505695, 2881505696

邮箱: mlbio_cn@yeah.net

网址: www.mlbio.cn