

Anti-KLF2 antibody

Cat. No.	ml163587
Package	25 µl/100 µl/200 µl
Storage	-20°C, pH7.4 PBS, 0.05% NaN ₃ , 40% Glycerol

Product overview

Description	Anti-KLF2 rabbit polyclonal antibody
Applications	ELISA, WB
Immunogen	Synthetic peptide of human KLF2
Reactivity	Human, Mouse, Rat
Content	0.2 mg/ml
Host species	Rabbit
Ig class	Immunogen-specific rabbit IgG
Purification	Antigen affinity purification

Target information

Symbol	KLF2
Full name	Kruppel like factor 2
Synonyms	LKLF
Swissprot	Q9Y5W3

Target Background

The krüppel-type zinc finger transcription factors comprise a conserved family of DNA binding proteins that are important in developmental regulation. The krüppel zinc finger transcription factor was initially identified in *Drosophila* as a segmentation gene. Krüppel-like factors that have been characterized in mammals include erythroid krüppel-like transcription factor (EKLF), lung krüppel-like transcription factor (LKLF) and gut krüppel-like transcription factor (GKLF). EKLF is expressed principally in erythroid tissues, and LKLF expression is limited to the lung. GKLF is found predominantly in gut and has been shown to be expressed during growth arrest. In a developing mouse embryo, LKLF is necessary for normal tunica media formation and blood vessel stabilization. LKLF is also sufficient to program quiescence in T cells by negatively regulating the c-Myc-dependent pathway. The gene for human LKLF maps to chromosome 19p13.11.

订购热线: 4008-898-798

Applications

Western blotting

Predicted band size: 37 kDa

Positive control: A549 cell lysate

Recommended dilution: 200-1000

Gel: 8%SDS-PAGE

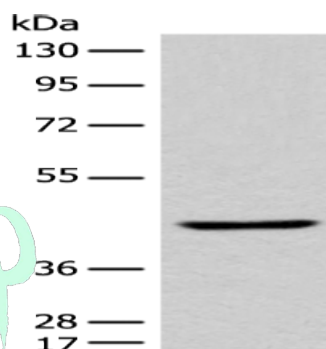
Lysate: 40 µg

Lane: A549 cell lysate

Primary antibody: ml163587(KLF2 Antibody) at dilution 1/200

Secondary antibody: Goat anti rabbit IgG at 1/8000 dilution

Exposure time: 1 minute



ELISA

Recommended dilution: 5000-10000

联系电话: 4008-898-798, 021-61725725

联系QQ: 2881505695, 2881505696

邮箱: mlbio_cn@yeah.net

网址: www.mlbio.cn