

## Anti-SLC5A8 antibody

<b>Cat. No.</b>	ml163602
<b>Package</b>	25 µl/100 µl/200 µl
<b>Storage</b>	-20°C, pH7.4 PBS, 0.05% NaN <sub>3</sub> , 40% Glycerol

### Product overview

<b>Description</b>	Anti-SLC5A8 rabbit polyclonal antibody
<b>Applications</b>	ELISA, WB
<b>Immunogen</b>	Synthetic peptide of human SLC5A8
<b>Reactivity</b>	Human
<b>Content</b>	0.5 mg/ml
<b>Host species</b>	Rabbit
<b>Ig class</b>	Immunogen-specific rabbit IgG
<b>Purification</b>	Antigen affinity purification

### Target information

<b>Symbol</b>	SLC5A8
<b>Full name</b>	solute carrier family 5 member 8
<b>Synonyms</b>	AIT; SMCT; SMCT1
<b>Swissprot</b>	Q8N695

### Target Background

SLC5A8 has been shown to transport iodide by a passive mechanism and monocarboxylates and short-chain fatty acids by a sodium-coupled mechanism .In kidney, SLC5A8 functions as a high-affinity sodium-coupled lactate transporter involved in reabsorption of lactate and maintenance of blood lactate levels.

订购热线: 4008-898-798

#### Applications

##### Western blotting

Predicted band size: 67 kDa

Positive control: Human cerebrum tissue lysate

Recommended dilution: 200-1000

Gel: 8%SDS-PAGE

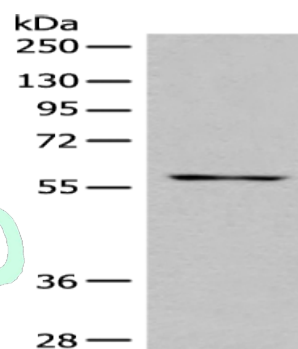
Lysate: 40 µg

Lane: Human cerebrum tissue lysate

Primary antibody: ml163602(SLC5A8 Antibody) at dilution 1/400

Secondary antibody: Goat anti rabbit IgG at 1/8000 dilution

Exposure time: 1 minute



##### ELISA

Recommended dilution: 5000-10000

联系电话: 4008-898-798, 021-61725725

联系QQ: 2881505695, 2881505696

邮箱: [mlbio\\_cn@yeah.net](mailto:mlbio_cn@yeah.net)

网址: [www.mlbio.cn](http://www.mlbio.cn)