

Anti-YWHAB antibody

Cat. No.	ml160652
Package	25 µl/100 µl/200 µl
Storage	-20°C, pH7.4 PBS, 0.05% NaN ₃ , 40% Glycerol

Product overview

Description	Anti-YWHAB rabbit polyclonal antibody
Applications	ELISA, WB
Immunogen	Synthetic peptide of human YWHAB
Reactivity	Human, Mouse, Rat
Content	0.4 mg/ml
Host species	Rabbit
Ig class	Immunogen-specific rabbit IgG
Purification	Antigen affinity purification

Target information

Symbol	YWHAB
Full name	tyrosine 3-monooxygenase/tryptophan 5-monooxygenase activation protein, beta polypeptide
Synonyms	HS1, GW128, YWHAA, KCIP-1
Swissprot	P31946

Target Background

This gene encodes a protein belonging to the 14-3-3 family of proteins, members of which mediate signal transduction by binding to phosphoserine-containing proteins. This highly conserved protein family is found in both plants and mammals. The encoded protein has been shown to interact with RAF1 and CDC25 phosphatases, suggesting that it may play a role in linking mitogenic signaling and the cell cycle machinery. Two transcript variants, which encode the same protein, have been identified for this gene.

订购热线: 4008-898-798

Applications

Western blotting

Predicted band size: 28 kDa

Positive control: Hela cells

Recommended dilution: 500-2000

Gel: 12% SDS-PAGE

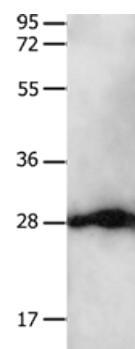
Lysate: 30 µg

Lane: Hela cells

Primary antibody: ml160652 (YWHAB Antibody) at dilution 1/550

Secondary antibody: Goat anti rabbit IgG at 1/8000 dilution

Exposure time: 5 seconds



ELISA

Recommended dilution: 1000-5000

联系电话: 4008-898-798, 021-61725725

联系QQ: 2881505695, 2881505696

邮箱: mlbio_cn@yeah.net

网址: www.mlbio.cn