

Anti-RBFOX3 antibody

Cat. No.	ml160666
Package	25 µl/100 µl/200 µl
Storage	-20°C, pH7.4 PBS, 0.05% NaN ₃ , 40% Glycerol

Product overview

Description	Anti-RBFOX3 rabbit polyclonal antibody
Applications	ELISA, WB, IHC
Immunogen	Synthetic peptide of human RBFOX3
Reactivity	Human, Mouse
Content	0.1 mg/ml
Host species	Rabbit
Ig class	Immunogen-specific rabbit IgG
Purification	Antigen affinity purification

Target information

Symbol	RBFOX3
Full name	RNA binding protein, fox-1 homolog (C. elegans) 3
Synonyms	FOX3; NEUN; FOX-3; HRNBP3
Swissprot	A6NFN3

Target Background

NeuN, also named as FOX3 and RBFOX3, is neuronal-specific nuclear protein with MW 38-50kd(~48kd). It is one of a family of 3 mammalian Fox homologues. FOX3 functions in RNA-binding protein that regulates alternative splicing events.

订购热线: 4008-898-798

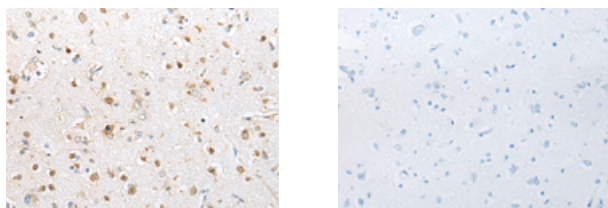
Applications

Immunohistochemistry

Predicted cell location: Nucleus

Positive control: Human brain

Recommended dilution: 10-50



The image on the left is immunohistochemistry of paraffin-embedded Human brain tissue using ml160666(RBFOX3 Antibody) at dilution 1/25, on the right is treated with synthetic peptide. (Original magnification: ×200)

Western blotting

Predicted band size: 34 kDa

Positive control: A549 cell lysate

Recommended dilution: 200-1000

Gel: 8%SDS-PAGE

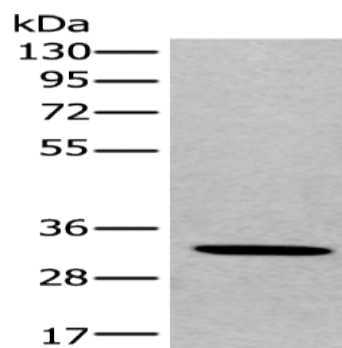
Lysate: 40 µg

Lane: A549 cell lysate

Primary antibody: ml160666(RBFOX3 Antibody) at dilution 1/200

Secondary antibody: Goat anti rabbit IgG at 1/8000 dilution

Exposure time: 20 seconds



ELISA

Recommended dilution: 5000-10000

联系电话: 4008-898-798, 021-61725725

联系QQ: 2881505695, 2881505696

邮箱: mlbio_cn@yeah.net

网址: www.mlbio.cn