

Anti-SGCG antibody

Cat. No.	ml163700
Package	25 µl/100 µl/200 µl
Storage	-20°C, pH7.4 PBS, 0.05% NaN ₃ , 40% Glycerol

Product overview

Description	Anti-SGCG rabbit polyclonal antibody
Applications	ELISA, WB
Immunogen	Synthetic peptide of human SGCG
Reactivity	Human, Mouse
Content	0.48 mg/ml
Host species	Rabbit
Ig class	Immunogen-specific rabbit IgG
Purification	Antigen affinity purification

Target information

Symbol	SGCG
Full name	sarcoglycan gamma
Synonyms	A4; MAM; DMDA; SCG3; 35DAG; DAGA4; DMDA1; LGMD2C; SCARMD2; gamma-SG
Swissprot	Q13326

Target Background

This gene encodes gamma-sarcoglycan, one of several sarcolemmal transmembrane glycoproteins that interact with dystrophin. The dystrophin-glycoprotein complex (DGC) spans the sarcolemma and is comprised of dystrophin, syntrophin, alpha- and beta-dystroglycans and sarcoglycans. The DGC provides a structural link between the subsarcolemmal cytoskeleton and the extracellular matrix of muscle cells. Defects in the encoded protein can lead to early onset autosomal recessive muscular dystrophy, in particular limb-girdle muscular dystrophy, type 2C (LGMD2C).

订购热线: 4008-898-798

Applications

Western blotting

Predicted band size: 32 kDa

Positive control: Human heart tissue and Mouse heart tissue lysates

Recommended dilution: 200-1000

Gel: 8%SDS-PAGE

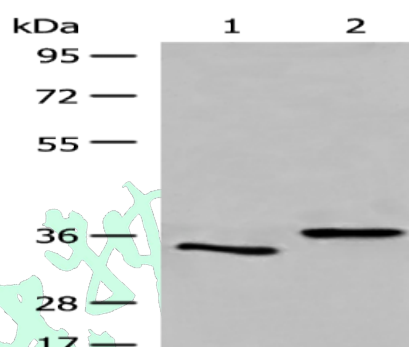
Lysate: 40 µg

Lane 1-2: Human heart tissue and Mouse heart tissue lysates

Primary antibody: ml163700(SGCG Antibody) at dilution 1/200

Secondary antibody: Goat anti rabbit IgG at 1/8000 dilution

Exposure time: 15 seconds



ELISA

Recommended dilution: 5000-10000

联系电话: 4008-898-798, 021-61725725

联系QQ: 2881505695, 2881505696

邮箱: mlbio_cn@yeah.net

网址: www.mlbio.cn