

## Anti-P2RY4 antibody

<b>Cat. No.</b>	ml160684
<b>Package</b>	25 µl/100 µl/200 µl
<b>Storage</b>	-20°C, pH7.4 PBS, 0.05% NaN <sub>3</sub> , 40% Glycerol

### Product overview

<b>Description</b>	Anti-P2RY4 rabbit polyclonal antibody
<b>Applications</b>	ELISA, WB, IHC
<b>Immunogen</b>	Synthetic peptide of human P2RY4
<b>Reactivity</b>	Human
<b>Content</b>	0.3 mg/ml
<b>Host species</b>	Rabbit
<b>Ig class</b>	Immunogen-specific rabbit IgG
<b>Purification</b>	Antigen affinity purification

### Target information

<b>Symbol</b>	P2RY4
<b>Full name</b>	pyrimidinergic receptor P2Y, G-protein coupled, 4
<b>Synonyms</b>	NRU, P2P, UNR, P2Y4
<b>Swissprot</b>	P51582

### Target Background

The product of this gene belongs to the family of G-protein coupled receptors. This family has several receptor subtypes with different pharmacological selectivity, which overlaps in some cases, for various adenosine and uridine nucleotides. This receptor is responsive to uridine nucleotides, partially responsive to ATP, and not responsive to ADP.

订购热线: 4008-898-798

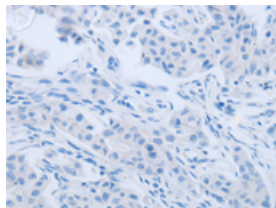
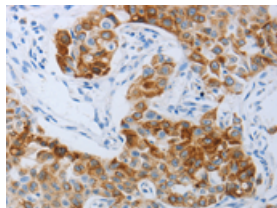
## Applications

### Immunohistochemistry

Predicted cell location: Cytoplasm, Cell membrane

Positive control: Human lung cancer

Recommended dilution: 25-100

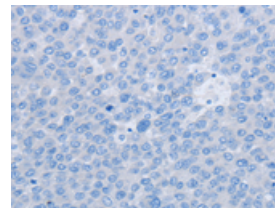
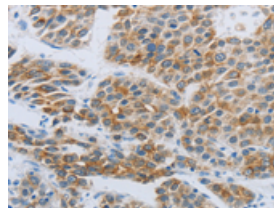


The image on the left is immunohistochemistry of paraffin-embedded Human lung cancer tissue using ml160684(P2RY4 Antibody) at dilution 1/30, on the right is treated with synthetic peptide. (Original magnification:  $\times 200$ )

Predicted cell location: Cytoplasm, Cell membrane

Positive control: Human liver cancer

Recommended dilution: 25-100



The image on the left is immunohistochemistry of paraffin-embedded Human liver cancer tissue using ml160684(P2RY4 Antibody) at dilution 1/30, on the right is treated with synthetic peptide. (Original magnification:  $\times 200$ )

### Western blotting

Predicted band size: 41 kDa

Positive control: K562 cells

Recommended dilution: 200-1000

Gel: 10% SDS-PAGE

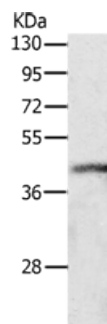
Lysate: 40  $\mu$ g

Lane: K562 cells

Primary antibody: ml160684(P2RY4 Antibody) at dilution 1/500

Secondary antibody: Goat anti rabbit IgG at 1/8000 dilution

Exposure time: 1 minute



### ELISA

Recommended dilution: 1000-2000

联系电话: 4008-898-798, 021-61725725

联系QQ: 2881505695, 2881505696

邮箱: [mlbio\\_cn@yeah.net](mailto:mlbio_cn@yeah.net)

网址: [www.mlbio.cn](http://www.mlbio.cn)