

Anti-EEA1 antibody

| | |
|-----------------|---|
| Cat. No. | ml163757 |
| Package | 25 µl/100 µl/200 µl |
| Storage | -20°C, pH7.4 PBS, 0.05% NaN ₃ , 40% Glycerol |

Product overview

| | |
|---------------------|--------------------------------------|
| Description | Anti-EEA1 rabbit polyclonal antibody |
| Applications | ELISA, WB |
| Immunogen | Synthetic peptide of human EEA1 |
| Reactivity | Human, Mouse |
| Content | 1.02 mg/ml |
| Host species | Rabbit |
| Ig class | Immunogen-specific rabbit IgG |
| Purification | Antigen affinity purification |

Target information

| | |
|------------------|--------------------------|
| Symbol | EEA1 |
| Full name | early endosome antigen 1 |
| Synonyms | MST105; ZFYVE2; MSTP105 |
| Swissprot | Q15075 |

Target Background

EEA1 is an early endosomal marker and a Rab5 effector protein essential for early endosomal membrane fusion and trafficking. The carboxy terminus of EEA1 contains a FYVE domain which binds to phosphatidylinositol-3-phosphate (PtdIns(3)P), targeting EEA1 to early endosomes. The stable association of EEA1 with the endosomal membrane is regulated by PI3 kinase, Rab5 and calcium/calmodulin. Once on the membrane, EEA1 interacts with Rab5, NSF and syntaxin 13 to promote early endosomal membrane docking and fusion.

订购热线: 4008-898-798

Applications

Western blotting

Predicted band size: 163 kDa

Positive control: Hela, 293T, RAW264.7 and NIH/3T3 cell lysates

Recommended dilution: 200-1000

Gel: 6% SDS-PAGE

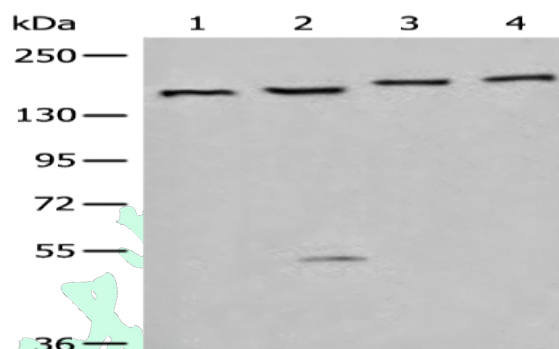
Lysate: 40 µg

Lane 1-4: Hela, 293T, RAW264.7 and NIH/3T3 cell lysates

Primary antibody: ml163757 (EEA1 Antibody) at dilution 1/450

Secondary antibody: Goat anti rabbit IgG at 1/8000 dilution

Exposure time: 20 seconds



ELISA

Recommended dilution: 5000-10000

联系电话: 4008-898-798, 021-61725725

联系QQ: 2881505695, 2881505696

邮箱: mlbio_cn@yeah.net

网址: www.mlbio.cn