

## Anti-EFHD2 antibody

<b>Cat. No.</b>	ml163761
<b>Package</b>	25 µl/100 µl/200 µl
<b>Storage</b>	-20°C, pH7.4 PBS, 0.05% NaN <sub>3</sub> , 40% Glycerol

### Product overview

<b>Description</b>	Anti-EFHD2 rabbit polyclonal antibody
<b>Applications</b>	ELISA, WB
<b>Immunogen</b>	Synthetic peptide of human EFHD2
<b>Reactivity</b>	Human, Mouse, Rat
<b>Content</b>	0.84 mg/ml
<b>Host species</b>	Rabbit
<b>Ig class</b>	Immunogen-specific rabbit IgG
<b>Purification</b>	Antigen affinity purification

### Target information

<b>Symbol</b>	EFHD2
<b>Full name</b>	EF-hand domain family member D2
<b>Synonyms</b>	SWS1
<b>Swissprot</b>	Q96C19

### Target Background

EFHD2 is a calcium-binding adaptor protein associated with pathologically aggregated tau in Alzheimer disease brain and in a mouse model of frontotemporal dementia. EFHD2 has cell type-specific functions, including modulation of intracellular calcium responses, actin dynamics, and microtubule transport. May regulate B-cell receptor (BCR)-induced immature and primary B-cell apoptosis. Plays a role as negative regulator of the canonical NF-kappa-B-activating branch. Controls spontaneous apoptosis through the regulation of BCL2L1 abundance.

订购热线: 4008-898-798

#### Applications

##### Western blotting

Predicted band size: 27 kDa

Positive control: A549 cell lysate

Recommended dilution: 200-1000

Gel: 12% SDS-PAGE

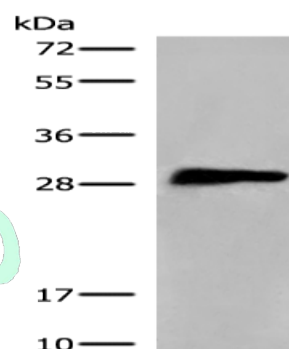
Lysate: 40 µg

Lane: A549 cell lysate

Primary antibody: ml163761 (EFHD2 Antibody) at dilution 1/350

Secondary antibody: Goat anti rabbit IgG at 1/8000 dilution

Exposure time: 10 seconds



##### ELISA

Recommended dilution: 5000-10000

联系电话: 4008-898-798, 021-61725725

联系QQ: 2881505695, 2881505696

邮箱: [mlbio\\_cn@yeah.net](mailto:mlbio_cn@yeah.net)

网址: [www.mlbio.cn](http://www.mlbio.cn)