

## Anti-EHD3 antibody

|                 |   |
|-----------------|---|
| <b>Cat. No.</b> | ml163763  |
| <b>Package</b>  | 25 µl/100 µl/200 µl                                     |
| <b>Storage</b>  | -20°C, pH7.4 PBS, 0.05% NaN <sub>3</sub> , 40% Glycerol |

### Product overview

|                     |                                      |
|---------------------|--------------------------------------|
| <b>Description</b>  | Anti-EHD3 rabbit polyclonal antibody |
| <b>Applications</b> | ELISA, WB                            |
| <b>Immunogen</b>    | Synthetic peptide of human EHD3      |
| <b>Reactivity</b>   | Human, Mouse, Rat                    |
| <b>Content</b>      | 0.72 mg/ml                           |
| <b>Host species</b> | Rabbit                               |
| <b>Ig class</b>     | Immunogen-specific rabbit IgG        |
| <b>Purification</b> | Antigen affinity purification        |

### Target information

|                  |                        |
|------------------|------------------------|
| <b>Symbol</b>    | EHD3                   |
| <b>Full name</b> | EH domain containing 3 |
| <b>Synonyms</b>  | PAST3                  |
| <b>Swissprot</b> | Q9NZN3                 |

### Target Background

ATP- and membrane-binding protein that controls membrane reorganization/tubulation upon ATP hydrolysis . In vitro causes tubulation of endocytic membranes . Binding to phosphatidic acid induces its membrane tubulation activity. Plays a role in endocytic transport. Involved in early endosome to recycling endosome compartment (ERC), retrograde early endosome to Golgi, and endosome to plasma membrane (rapid recycling) protein transport. Involved in the regulation of Golgi maintenance and morphology. Involved in the recycling of internalized D1 dopamine receptor . Plays a role in cardiac protein trafficking probably implicating ANK2. Involved in the ventricular membrane targeting of SLC8A1 and CACNA1C and probably the atrial membrane localization of CACNA1GG and CACNA1H implicated in the regulation of atrial myocyte excitability and cardiac conduction .

订购热线: 4008-898-798

#### Applications

##### Western blotting

Predicted band size: 61 kDa

Positive control: NIH/3T3 cell and Human heart tissue lysates

Recommended dilution: 200-1000

Gel: 8%SDS-PAGE

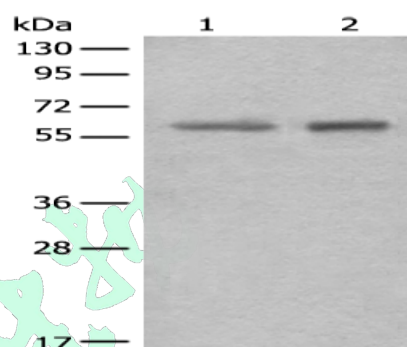
Lysate: 40 µg

Lane 1-2: NIH/3T3 cell and Human heart tissue lysates

Primary antibody: ml163763(EHD3 Antibody) at dilution 1/300

Secondary antibody: Goat anti rabbit IgG at 1/8000 dilution

Exposure time: 1 minute



##### ELISA

Recommended dilution: 5000-10000

联系电话: 4008-898-798, 021-61725725

联系QQ: 2881505695, 2881505696

邮箱: [mlbio\\_cn@yeah.net](mailto:mlbio_cn@yeah.net)

网址: [www.mlbio.cn](http://www.mlbio.cn)