

## Anti-ADGRE3 antibody

|                 |   |
|-----------------|---|
| <b>Cat. No.</b> | ml163779  |
| <b>Package</b>  | 25 µl/100 µl/200 µl                                     |
| <b>Storage</b>  | -20°C, pH7.4 PBS, 0.05% NaN <sub>3</sub> , 40% Glycerol |

### Product overview

|                     |  |
|---------------------|--|
| <b>Description</b>  | Anti-ADGRE3 rabbit polyclonal antibody |
| <b>Applications</b> | ELISA, WB                              |
| <b>Immunogen</b>    | Synthetic peptide of human ADGRE3      |
| <b>Reactivity</b>   | Human                                  |
| <b>Content</b>      | 0.96 mg/ml                             |
| <b>Host species</b> | Rabbit                                 |
| <b>Ig class</b>     | Immunogen-specific rabbit IgG          |
| <b>Purification</b> | Antigen affinity purification          |

### Target information

|                  |  |
|------------------|--|
| <b>Symbol</b>    | ADGRE3                                 |
| <b>Full name</b> | adhesion G protein-coupled receptor E3 |
| <b>Synonyms</b>  | EMR3                                   |
| <b>Swissprot</b> | Q9BY15                                 |

### Target Background

This gene encodes a member of the class B seven-span transmembrane (TM7) receptor family expressed predominantly by cells of the immune system. Family members are characterized by an extended extracellular region with a variable number of N-terminal epidermal growth factor (EGF)-like domains coupled to a TM7 domain via a mucin-like spacer domain. This gene is closely linked to the gene encoding egf-like molecule containing mucin-like hormone receptor 2 on chromosome 19. This protein may play a role in myeloid-myeloid interactions during immune and inflammatory responses. Alternative splicing results in multiple transcript variants encoding different isoforms.

订购热线: 4008-898-798

#### Applications

##### Western blotting

Predicted band size: 73 kDa

Positive control: Human hepatocellular carcinoma 2 tissue lysate

Recommended dilution: 500-2000

Gel: 8%SDS-PAGE

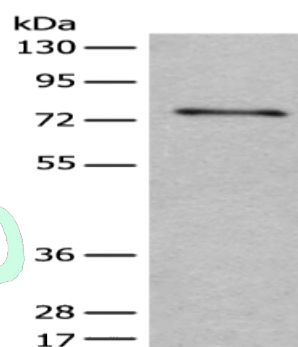
Lysate: 40 µg

Lane: Human hepatocellular carcinoma 2 tissue lysate

Primary antibody: ml163779(ADGRE3 Antibody) at dilution 1/400

Secondary antibody: Goat anti rabbit IgG at 1/8000 dilution

Exposure time: 3 seconds



##### ELISA

Recommended dilution: 5000-10000

联系电话: 4008-898-798, 021-61725725

联系QQ: 2881505695, 2881505696

邮箱: [mlbio\\_cn@yeah.net](mailto:mlbio_cn@yeah.net)

网址: [www.mlbio.cn](http://www.mlbio.cn)