

## Anti-FAM213A antibody

<b>Cat. No.</b>	ml163856
<b>Package</b>	25 µl/100 µl/200 µl
<b>Storage</b>	-20°C, pH7.4 PBS, 0.05% NaN <sub>3</sub> , 40% Glycerol

### Product overview

<b>Description</b>	Anti-FAM213A rabbit polyclonal antibody
<b>Applications</b>	ELISA, WB
<b>Immunogen</b>	Synthetic peptide of human FAM213A
<b>Reactivity</b>	Human, Mouse, Rat
<b>Content</b>	1.02 mg/ml
<b>Host species</b>	Rabbit
<b>Ig class</b>	Immunogen-specific rabbit IgG
<b>Purification</b>	Antigen affinity purification

### Target information

<b>Symbol</b>	FAM213A
<b>Full name</b>	family with sequence similarity 213 member A
<b>Synonyms</b>	Adrx; PAMM; C10orf58
<b>Swissprot</b>	Q9BRX8

### Target Background

Involved in redox regulation of the cell. Acts as an antioxidant. Inhibits TNFSF11-induced NFκB1 and JUN activation and osteoclast differentiation. May affect bone resorption and help to maintain bone mass. Acts as a negative regulator of macrophage-mediated inflammation by inhibiting macrophage production of inflammatory cytokines, probably through suppression of the MAPK signaling pathway.

订购热线: 4008-898-798

#### Applications

##### Western blotting

Predicted band size: 26 kDa

Positive control: Human fat tissue and A375 cell lysates

Recommended dilution: 500-2000

Gel: 12% SDS-PAGE

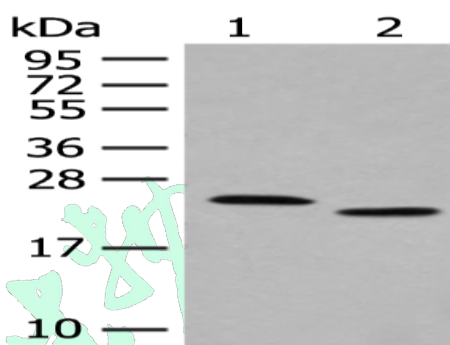
Lysate: 40 µg

Lane 1-2: Human fat tissue and A375 cell lysates

Primary antibody: ml163856 (FAM213A Antibody) at dilution 1/400

Secondary antibody: Goat anti rabbit IgG at 1/8000 dilution

Exposure time: 1 minute



##### ELISA

Recommended dilution: 5000-10000

联系电话: 4008-898-798, 021-61725725

联系QQ: 2881505695, 2881505696

邮箱: [mlbio\\_cn@yeah.net](mailto:mlbio_cn@yeah.net)

网址: [www.mlbio.cn](http://www.mlbio.cn)