

Anti-ACP2 antibody

Cat. No.	ml160820
Package	25 µl/100 µl/200 µl
Storage	-20°C, pH7.4 PBS, 0.05% NaN ₃ , 40% Glycerol

Product overview

Description	Anti-ACP2 rabbit polyclonal antibody
Applications	ELISA, WB
Immunogen	Synthetic peptide of human ACP2
Reactivity	Human, Mouse, Rat
Content	0.2 mg/ml
Host species	Rabbit
Ig class	Immunogen-specific rabbit IgG
Purification	Antigen affinity purification

Target information

Symbol	ACP2
Full name	acid phosphatase 2, lysosomal
Synonyms	
Swissprot	P11117

Target Background

This gene encodes the beta subunit of lysosomal acid phosphatase (LAP). LAP is chemically and genetically distinct from red cell acid phosphatase. The encoded protein belongs to a family of distinct isoenzymes which hydrolyze orthophosphoric monoesters to alcohol and phosphate. Mutations in this gene or in the related alpha subunit gene cause acid phosphatase deficiency. Multiple alternatively spliced transcript variants encoding different isoforms have been identified for this gene.

订购热线: 4008-898-798

Applications

Western blotting

Predicted band size: 48 kDa

Positive control: A431, A549 and hela cells

Recommended dilution: 200-1000

Gel: 8%SDS-PAGE

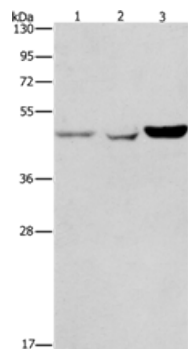
Lysate: 40 µg

Lane 1-3: A431 cells, A549 cells, hela cells

Primary antibody: ml160820(ACP2 Antibody) at dilution 1/150

Secondary antibody: Goat anti rabbit IgG at 1/8000 dilution

Exposure time: 40 seconds



ELISA

Recommended dilution: 1000-2000

联系电话: 4008-898-798, 021-61725725

联系QQ: 2881505695, 2881505696

邮箱: mlbio_cn@yeah.net

网址: www.mlbio.cn