

Anti-AGPAT2 antibody

Cat. No.	ml160840
Package	25 µl/100 µl/200 µl
Storage	-20°C, pH7.4 PBS, 0.05% NaN ₃ , 40% Glycerol

Product overview

Description	Anti-AGPAT2 rabbit polyclonal antibody
Applications	ELISA, WB
Immunogen	Synthetic peptide of human AGPAT2
Reactivity	Human
Content	0.2 mg/ml
Host species	Rabbit
Ig class	Immunogen-specific rabbit IgG
Purification	Antigen affinity purification

Target information

Symbol	AGPAT2
Full name	1-acylglycerol-3-phosphate O-acyltransferase 2
Synonyms	BSCL; BSCL1; LPAAB; 1-AGPAT2; LPAAT-beta
Swissprot	O15120

Target Background

This gene encodes a member of the 1-acylglycerol-3-phosphate O-acyltransferase family. The protein is located within the endoplasmic reticulum membrane and converts lysophosphatidic acid to phosphatidic acid, the second step in de novo phospholipid biosynthesis. Mutations in this gene have been associated with congenital generalized lipodystrophy (CGL), or Berardinelli-Seip syndrome, a disease characterized by a near absence of adipose tissue and severe insulin resistance. Alternate transcriptional splice variants, encoding different isoforms, have been characterized.

订购热线: 4008-898-798

Applications

Western blotting

Predicted band size: 27 kDa

Positive control: Human fetal liver cancer tissue

Recommended dilution: 500-2000

Gel: 12% SDS-PAGE

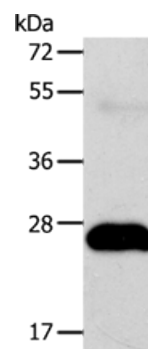
Lysate: 40 µg

Lane: Human fetal liver cancer tissue

Primary antibody: ml160840 (AGPAT2 Antibody) at dilution 1/400

Secondary antibody: Goat anti rabbit IgG at 1/8000 dilution

Exposure time: 30 seconds



ELISA

Recommended dilution: 2000-5000

联系电话: 4008-898-798, 021-61725725

联系QQ: 2881505695, 2881505696

邮箱: mlbio_cn@yeah.net

网址: www.mlbio.cn