

Anti-TRIM8 antibody

Cat. No.	ml163983
Package	25 µl/100 µl/200 µl
Storage	-20°C, pH7.4 PBS, 0.05% NaN ₃ , 40% Glycerol

Product overview

Description	Anti-TRIM8 rabbit polyclonal antibody
Applications	ELISA, WB
Immunogen	Synthetic peptide of human TRIM8
Reactivity	Human, Mouse
Content	1.74 mg/ml
Host species	Rabbit
Ig class	Immunogen-specific rabbit IgG
Purification	Antigen affinity purification

Target information

Symbol	TRIM8
Full name	tripartite motif containing 8
Synonyms	GERP; RNF27
Swissprot	Q9BZR9

Target Background

This gene encodes a member of the tripartite motif (TRIM) protein family. Based on similarities to other proteins, the encoded protein is suspected to be an E3 ubiquitin-protein ligase. Regulation of this gene may be altered in some cancers. Mutations resulting in a truncated protein product have been observed in early-onset epileptic encephalopathy (EOEE).

订购热线: 4008-898-798

Applications

Western blotting

Predicted band size: 61 kDa

Positive control: Human placenta tissue and Human fetal brain tissue lysates

Recommended dilution: 500-2000

Gel: 8%SDS-PAGE

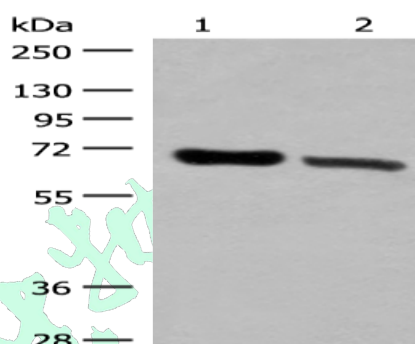
Lysate: 40 µg

Lane 1-2: Human placenta tissue and Human fetal brain tissue lysates

Primary antibody: ml163983(TRIM8 Antibody) at dilution 1/500

Secondary antibody: Goat anti rabbit IgG at 1/8000 dilution

Exposure time: 1 minute



ELISA

Recommended dilution: 5000-10000

联系电话: 4008-898-798, 021-61725725

联系QQ: 2881505695, 2881505696

邮箱: mlbio_cn@yeah.net

网址: www.mlbio.cn