

Anti-GLCCI1 antibody

Cat. No.	ml163993
Package	25 µl/100 µl/200 µl
Storage	-20°C, pH7.4 PBS, 0.05% NaN ₃ , 40% Glycerol

Product overview

Description	Anti-GLCCI1 rabbit polyclonal antibody
Applications	ELISA, WB
Immunogen	Synthetic peptide of human GLCCI1
Reactivity	Human, Mouse
Content	1.02 mg/ml
Host species	Rabbit
Ig class	Immunogen-specific rabbit IgG
Purification	Antigen affinity purification

Target information

Symbol	GLCCI1
Full name	glucocorticoid induced 1
Synonyms	GCTR; GIG18; TSSN1; FAM117C
Swissprot	Q86VQ1

Target Background

This gene encodes a protein of unknown function. Expression of this gene is induced by glucocorticoids and may be an early marker for glucocorticoid-induced apoptosis. Single nucleotide polymorphisms in this gene are associated with a decreased response to inhaled glucocorticoids in asthmatic patients.

订购热线: 4008-898-798

Applications

Western blotting

Predicted band size: 58 kDa

Positive control: Human cerebella tissue lysate

Recommended dilution: 500-2000

Gel: 8%SDS-PAGE

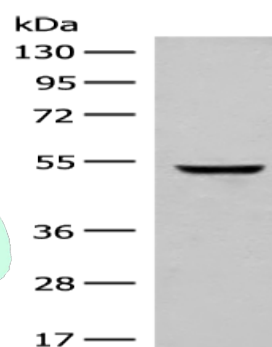
Lysate: 40 µg

Lane: Human cerebella tissue lysate

Primary antibody: ml163993(GLCC11 Antibody) at dilution 1/400

Secondary antibody: Goat anti rabbit IgG at 1/8000 dilution

Exposure time: 10 seconds



ELISA

Recommended dilution: 5000-10000

联系电话: 4008-898-798, 021-61725725

联系QQ: 2881505695, 2881505696

邮箱: mlbio_cn@yeah.net

网址: www.mlbio.cn