

Anti-GPR137 antibody

Cat. No.	ml164088
Package	25 µl/100 µl/200 µl
Storage	-20°C, pH7.4 PBS, 0.05% NaN ₃ , 40% Glycerol

Product overview

Description	Anti-GPR137 rabbit polyclonal antibody
Applications	ELISA, WB
Immunogen	Synthetic peptide of human GPR137
Reactivity	Human, Mouse
Content	0.6 mg/ml
Host species	Rabbit
Ig class	Immunogen-specific rabbit IgG
Purification	Antigen affinity purification

Target information

Symbol	GPR137
Full name	G protein-coupled receptor 137
Synonyms	C11orf4; GPR137A; TM7SF1L1
Swissprot	Q96N19

Target Background

G protein-coupled receptors (GPRs) are highly related to oncogenesis and cancer metastasis. G protein-coupled receptor 137 (GPR137) was initially reported as a novel orphan GPR about 10 years ago. GPR137 is ubiquitously expressed in the central nervous system (CNS), mainly in the hippocampus (PMID: 22025619). GPR137 is involved in the progression of human glioma, suggesting GPR137 as a potential oncogene of glioma cells (PMID: 24870220). Recent study shows that GPR137 plays an important role in colon cancer cell proliferation (PMID: 25301753).

订购热线: 4008-898-798

Applications

Western blotting

Predicted band size: 46 kDa

Positive control: TM4, PC3 and NIH/3T3 cell lysates, Human cerebrum tissue lysates

Recommended dilution: 200-1000

Gel: 8%SDS-PAGE

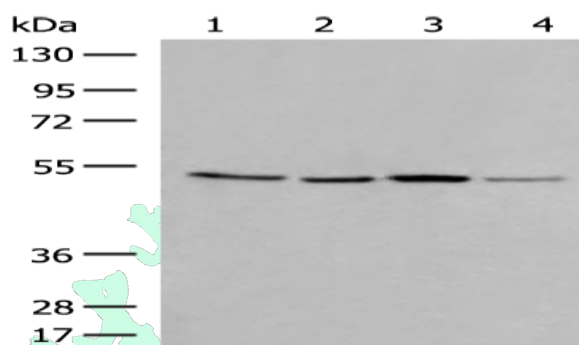
Lysate: 40 µg

Lane 1-4: TM4, PC3 and NIH/3T3 cell lysates, Human cerebrum tissue lysates

Primary antibody: ml164088(GPR137 Antibody) at dilution 1/250

Secondary antibody: Goat anti rabbit IgG at 1/8000 dilution

Exposure time: 2 minutes



ELISA

Recommended dilution: 5000-10000

联系电话: 4008-898-798, 021-61725725

联系QQ: 2881505695, 2881505696

邮箱: mlbio_cn@yeah.net

网址: www.mlbio.cn