

Anti-NDRG3 antibody

Cat. No.	ml161015
Package	25 µl/100 µl/200 µl
Storage	-20°C, pH7.4 PBS, 0.05% NaN ₃ , 40% Glycerol

Product overview

Description	Anti-NDRG3 rabbit polyclonal antibody
Applications	ELISA, WB, IHC
Immunogen	Synthetic peptide of human NDRG3
Reactivity	Human, Mouse, Rat
Content	0.5 mg/ml
Host species	Rabbit
Ig class	Immunogen-specific rabbit IgG
Purification	Antigen affinity purification

Target information

Symbol	NDRG3
Full name	NDRG family member 3
Synonyms	
Swissprot	Q9UGV2

Target Background

NDRG3 belongs to the N-myc down-regulated gene (NDRG) family that contains 4 paralogs: NDRG1, -2, -3 and -4. The function of NDRG3 and its relationship to cancer has not been studied. NDRG3 expression is enriched in testis and prostate using gene expression data derived from massively parallel signature sequencing from 33 different human organs. NDRG3 is also expressed in both epithelial prostate cancer cells and prostatic stromal cells at both mRNA and proteins levels.

订购热线: 4008-898-798

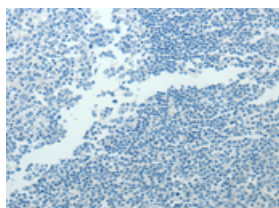
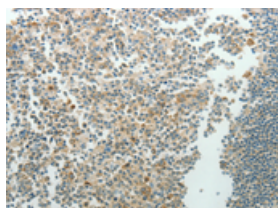
Applications

Immunohistochemistry

Predicted cell location: Cytoplasm

Positive control: Human tonsil

Recommended dilution: 100-300

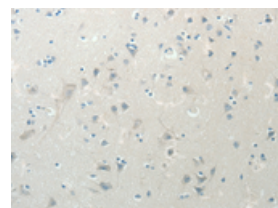
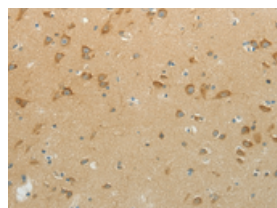


The image on the left is immunohistochemistry of paraffin-embedded Human tonsil tissue using ml161015(NDRG3 Antibody) at dilution 1/70, on the right is treated with synthetic peptide. (Original magnification: $\times 200$)

Predicted cell location: Cytoplasm

Positive control: Human brain

Recommended dilution: 100-300



The image on the left is immunohistochemistry of paraffin-embedded Human brain tissue using ml161015(NDRG3 Antibody) at dilution 1/70, on the right is treated with synthetic peptide. (Original magnification: $\times 200$)

Western blotting

Predicted band size: 41 kDa

Positive control: Mouse brain tissue

Recommended dilution: 1000-5000

Gel: 12% SDS-PAGE

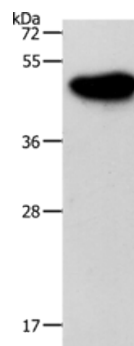
Lysate: 30 μ g

Lane: Mouse brain tissue

Primary antibody: ml161015(NDRG3 Antibody) at dilution 1/1050

Secondary antibody: Goat anti rabbit IgG at 1/8000 dilution

Exposure time: 2 seconds



ELISA

Recommended dilution: 2000-10000

联系电话: 4008-898-798, 021-61725725

联系QQ: 2881505695, 2881505696

邮箱: mlbio_cn@yeah.net

网址: www.mlbio.cn