

## Anti-NFKB2 antibody

|                 |   |
|-----------------|---|
| <b>Cat. No.</b> | ml161024  |
| <b>Package</b>  | 25 µl/100 µl/200 µl                                     |
| <b>Storage</b>  | -20°C, pH7.4 PBS, 0.05% NaN <sub>3</sub> , 40% Glycerol |

### Product overview

|                     |                                       |
|---------------------|---------------------------------------|
| <b>Description</b>  | Anti-NFKB2 rabbit polyclonal antibody |
| <b>Applications</b> | ELISA, WB                             |
| <b>Immunogen</b>    | Synthetic peptide of human NFKB2      |
| <b>Reactivity</b>   | Human, Mouse                          |
| <b>Content</b>      | 0.5 mg/ml                             |
| <b>Host species</b> | Rabbit                                |
| <b>Ig class</b>     | Immunogen-specific rabbit IgG         |
| <b>Purification</b> | Antigen affinity purification         |

### Target information

|                  |   |
|------------------|---|
| <b>Symbol</b>    | NFKB2   |
| <b>Full name</b> | nuclear factor of kappa light polypeptide gene enhancer in B-cells 2 (p49/p100) |
| <b>Synonyms</b>  | p52, p105, H2TF1, LYT10, LYT-10, NF-kB2   |
| <b>Swissprot</b> | Q00653  |

### Target Background

This gene encodes one of the subunits of the transcription factor complex nuclear factor-kappa-B (NFkB). The NFkB transcription factor complex is expressed in numerous cell types and functions as a central activator of genes involved in inflammation and immune function. The NFkB complex can consist of different subunits that form both homo- or heterodimers which bind specific kappa-B elements in target genes. This gene encodes the p100 subunit that is processed into the active p52 subunit. This protein can function as both a transcriptional activator and repressor, depending on its dimer partner. Alternate splicing results in both coding and non-coding variants.

订购热线: 4008-898-798

#### Applications

##### Western blotting

Predicted band size: 97 kDa

Positive control: HT-29 and SKOV3 cells

Recommended dilution: 1000-5000

Gel: 10% SDS-PAGE

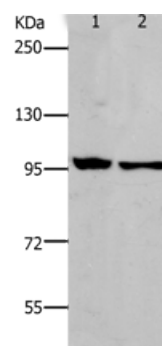
Lysate: 40 µg

Lane 1-2: HT29 cells, SKOV3 cells

Primary antibody: ml161024(NFKB2 Antibody) at dilution 1/800

Secondary antibody: Goat anti rabbit IgG at 1/8000 dilution

Exposure time: 20 seconds



##### ELISA

Recommended dilution: 2000-10000

联系电话: 4008-898-798, 021-61725725

联系QQ: 2881505695, 2881505696

邮箱: [mlbio\\_cn@yeah.net](mailto:mlbio_cn@yeah.net)

网址: [www.mlbio.cn](http://www.mlbio.cn)