

Anti-ENO2 antibody

Cat. No.	ml161053
Package	25 µl/100 µl/200 µl
Storage	-20°C, pH7.4 PBS, 0.05% NaN ₃ , 40% Glycerol

Product overview

Description	Anti-ENO2 rabbit polyclonal antibody
Applications	ELISA, WB
Immunogen	Synthetic peptide of human ENO2
Reactivity	Human, Mouse, Rat
Content	0.6 mg/ml
Host species	Rabbit
Ig class	Immunogen-specific rabbit IgG
Purification	Antigen affinity purification

Target information

Symbol	ENO2
Full name	Enolase 2 (gamma, neuronal)
Synonyms	NSE
Swissprot	P09104

Target Background

This gene encodes one of the three enolase isoenzymes found in mammals. This isoenzyme, a homodimer, is found in mature neurons and cells of neuronal origin. A switch from alpha enolase to gamma enolase occurs in neural tissue during development in rats and primates. Has neurotrophic and neuroprotective properties on a broad spectrum of central nervous system (CNS) neurons. Binds, in a calcium-dependent manner, to cultured neocortical neurons and promotes cell survival.

订购热线: 4008-898-798

Applications

Western blotting

Predicted band size: 47 kDa

Positive control: 293T and Jurkat cells

Recommended dilution: 1000-5000

Gel: 10%SDS-PAGE

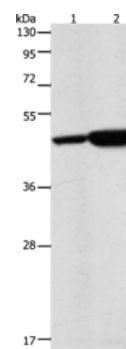
Lysate: 40 µg

Lane 1-2: 293T cells, Jurkat cells

Primary antibody: ml161053(ENO2 Antibody) at dilution 1/1250

Secondary antibody: Goat anti rabbit IgG at 1/8000 dilution

Exposure time: 30 seconds



ELISA

Recommended dilution: 2000-10000

联系电话: 4008-898-798, 021-61725725

联系QQ: 2881505695, 2881505696

邮箱: mlbio_cn@yeah.net

网址: www.mlbio.cn