

Anti-KCTD7 antibody

Cat. No.	ml164339
Package	25 µl/100 µl/200 µl
Storage	-20°C, pH7.4 PBS, 0.05% NaN ₃ , 40% Glycerol

Product overview

Description	Anti-KCTD7 rabbit polyclonal antibody
Applications	ELISA, WB
Immunogen	Synthetic peptide of human KCTD7
Reactivity	Human, Mouse, Rat
Content	1.56 mg/ml
Host species	Rabbit
Ig class	Immunogen-specific rabbit IgG
Purification	Antigen affinity purification

Target information

Symbol	KCTD7
Full name	potassium channel tetramerization domain containing 7
Synonyms	EPM3; CLN14
Swissprot	Q96MP8

Target Background

This gene encodes a member of the potassium channel tetramerization domain-containing protein family. Family members are identified on a structural basis and contain an amino-terminal domain similar to the T1 domain present in the voltage-gated potassium channel. Mutations in this gene have been associated with progressive myoclonic epilepsy-3. Alternative splicing results in multiple transcript variants.

订购热线: 4008-898-798

Applications

Western blotting

Predicted band size: 33 kDa

Positive control: Hela cell lysate

Recommended dilution: 1000-5000

Gel: 12% SDS-PAGE

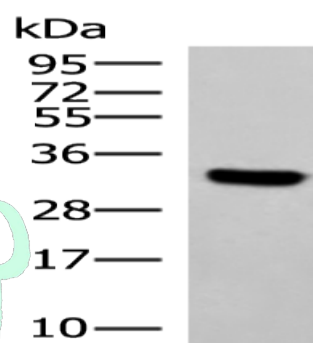
Lysate: 40 µg

Lane: Hela cell lysate

Primary antibody: ml164339(KCTD7 Antibody) at dilution 1/1200

Secondary antibody: Goat anti rabbit IgG at 1/5000 dilution

Exposure time: 1 minute



ELISA

Recommended dilution: 5000-10000

联系电话: 4008-898-798, 021-61725725

联系QQ: 2881505695, 2881505696

邮箱: mlbio_cn@yeah.net

网址: www.mlbio.cn