

Anti-PAK3 antibody

Cat. No.	ml161068
Package	25 µl/100 µl/200 µl
Storage	-20°C, pH7.4 PBS, 0.05% NaN ₃ , 40% Glycerol

Product overview

Description	Anti-PAK3 rabbit polyclonal antibody
Applications	ELISA, WB, IHC
Immunogen	Synthetic peptide of human PAK3
Reactivity	Human, Mouse, Rat
Content	0.5 mg/ml
Host species	Rabbit
Ig class	Immunogen-specific rabbit IgG
Purification	Antigen affinity purification

Target information

Symbol	PAK3
Full name	p21 protein (Cdc42/Rac)-activated kinase 3
Synonyms	bPAK; MRX30; MRX47; OPHN3; hPAK3; CDKN1A; PAK3beta
Swissprot	O75914

Target Background

PAK proteins are critical effectors that link Rho GTPases to cytoskeleton reorganization and nuclear signaling. PAK proteins, a family of serine/threonine p21-activating kinases, serve as targets for the small GTP binding proteins Cdc42 and RAC and have been implicated in a wide range of biological activities. The protein encoded by this gene forms an activated complex with GTP-bound RAS-like (P21), CDC2 and RAC1 proteins which then catalyzes a variety of targets.

订购热线: 4008-898-798

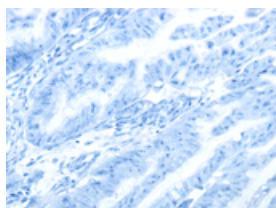
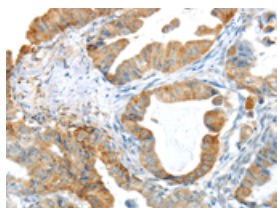
Applications

Immunohistochemistry

Predicted cell location: Cytoplasm

Positive control: Human esophagus cancer

Recommended dilution: 20-100

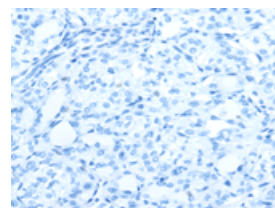
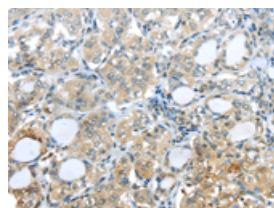


The image on the left is immunohistochemistry of paraffin-embedded Human esophagus cancer tissue using ml161068(PAK3 Antibody) at dilution 1/25, on the right is treated with synthetic peptide. (Original magnification: $\times 200$)

Predicted cell location: Cytoplasm

Positive control: Human thyroid cancer

Recommended dilution: 20-100



The image on the left is immunohistochemistry of paraffin-embedded Human thyroid cancer tissue using ml161068(PAK3 Antibody) at dilution 1/25, on the right is treated with synthetic peptide. (Original magnification: $\times 200$)

Western blotting

Predicted band size: 62 kDa

Positive control: Mouse brain tissue

Recommended dilution: 200-1000

Gel: 6%SDS-PAGE

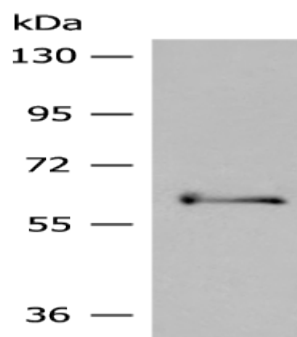
Lysate: 40 μ g

Lane: Mouse brain tissue

Primary antibody: ml161068(PAK3 Antibody) at dilution 1/200

Secondary antibody: Goat anti rabbit IgG at 1/8000 dilution

Exposure time: 1 minute



ELISA

Recommended dilution: 1000-2000

联系电话: 4008-898-798, 021-61725725

联系QQ: 2881505695, 2881505696

邮箱: mlbio_cn@yeah.net

网址: www.mlbio.cn