

Anti-PRKAR1B antibody

| | |
|-----------------|---|
| Cat. No. | ml161081 |
| Package | 25 µl/100 µl/200 µl |
| Storage | -20°C, pH7.4 PBS, 0.05% NaN ₃ , 40% Glycerol |

Product overview

| | |
|---------------------|---|
| Description | Anti-PRKAR1B rabbit polyclonal antibody |
| Applications | ELISA, WB, IHC |
| Immunogen | Synthetic peptide of human PRKAR1B |
| Reactivity | Human, Mouse, Rat |
| Content | 0.9 mg/ml |
| Host species | Rabbit |
| Ig class | Immunogen-specific rabbit IgG |
| Purification | Antigen affinity purification |

Target information

| | |
|------------------|--|
| Symbol | PRKAR1B |
| Full name | Protein kinase, cAMP-dependent, regulatory, type I, beta |
| Synonyms | PRKAR1 |
| Swissprot | P31321 |

Target Background

Cyclic AMP-dependent protein kinase A (PKA) is an essential enzyme in the signaling pathway of the second messenger cAMP. Through phosphorylation of target proteins, PKA controls many biochemical events in the cell including regulation of metabolism, ion transport, and gene transcription. The PKA holoenzyme is composed of 2 regulatory and 2 catalytic subunits and dissociates from the regulatory subunits upon binding of cAMP.

订购热线: 4008-898-798

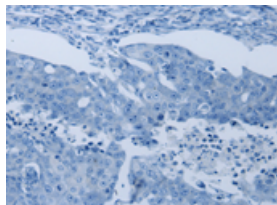
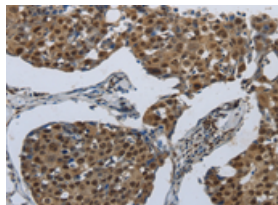
Applications

Immunohistochemistry

Predicted cell location: Cytoplasm, Nucleus

Positive control: Human breast cancer

Recommended dilution: 50-200

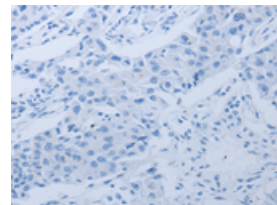
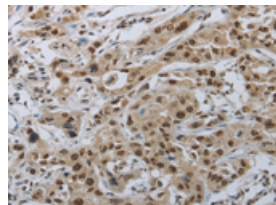


The image on the left is immunohistochemistry of paraffin-embedded Human breast cancer tissue using ml161081(PRKAR1B Antibody) at dilution 1/70, on the right is treated with synthetic peptide. (Original magnification: $\times 200$)

Predicted cell location: Cytoplasm, Nucleus

Positive control: Human lung cancer

Recommended dilution: 50-200



The image on the left is immunohistochemistry of paraffin-embedded Human lung cancer tissue using ml161081(PRKAR1B Antibody) at dilution 1/70, on the right is treated with synthetic peptide. (Original magnification: $\times 200$)

Western blotting

Predicted band size: 43 kDa

Positive control: Human colon cancer tissue

Recommended dilution: 1000-5000

Gel: 10% SDS-PAGE

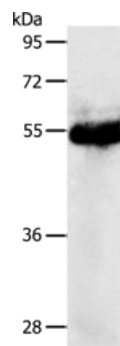
Lysate: 40 μ g

Lane: Human colon cancer tissue

Primary antibody: ml161081(PRKAR1B Antibody) at dilution 1/1200

Secondary antibody: Goat anti rabbit IgG at 1/8000 dilution

Exposure time: 20 seconds



ELISA

Recommended dilution: 2000-10000

联系电话: 4008-898-798, 021-61725725

联系QQ: 2881505695, 2881505696

邮箱: mlbio_cn@yeah.net

网址: www.mlbio.cn