

Anti-PSMD6 antibody

Cat. No.	ml161093
Package	25 µl/100 µl/200 µl
Storage	-20°C, pH7.4 PBS, 0.05% NaN ₃ , 40% Glycerol

Product overview

Description	Anti-PSMD6 rabbit polyclonal antibody
Applications	ELISA, WB, IHC
Immunogen	Synthetic peptide of human PSMD6
Reactivity	Human, Mouse
Content	0.5 mg/ml
Host species	Rabbit
Ig class	Immunogen-specific rabbit IgG
Purification	Antigen affinity purification

Target information

Symbol	PSMD6
Full name	Proteasome (prosome, macropain) 26S subunit, non-ATPase, 6
Synonyms	S10, Rpn7, p42A, p44S10, SGA-113M
Swissprot	Q15008

Target Background

This gene encodes a member of the protease subunit S10 family. The encoded protein is a subunit of the 26S proteasome which colocalizes with DNA damage foci and is involved in the ATP-dependent degradation of ubiquitinated proteins. Alternative splicing results in multiple transcript variants.

订购热线: 4008-898-798

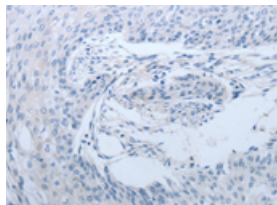
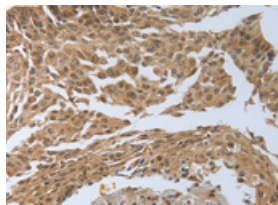
Applications

Immunohistochemistry

Predicted cell location: Cytoplasm, Nucleus

Positive control: Human cervical cancer

Recommended dilution: 50-200

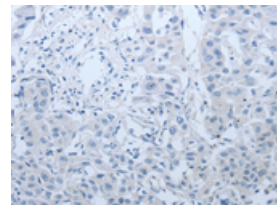
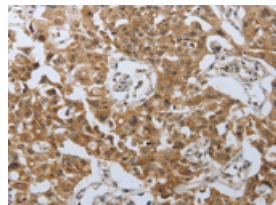


The image on the left is immunohistochemistry of paraffin-embedded Human cervical cancer tissue using ml161093(PSMD6 Antibody) at dilution 1/40, on the right is treated with synthetic peptide. (Original magnification: $\times 200$)

Predicted cell location: Cytoplasm, Nucleus

Positive control: Human lung cancer

Recommended dilution: 50-200



The image on the left is immunohistochemistry of paraffin-embedded Human lung cancer tissue using ml161093(PSMD6 Antibody) at dilution 1/40, on the right is treated with synthetic peptide. (Original magnification: $\times 200$)

Western blotting

Predicted band size: 49 kDa; 46 kDa

Positive control: Hela, 293T, NIH/3T3 and Jurkat cells

Recommended dilution: 500-2000

Gel: 10% SDS-PAGE

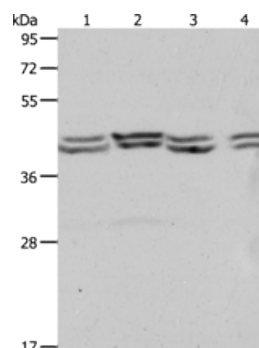
Lysate: 40 μ g

Lane 1-4: Hela cells, 293T cells, NIH/3T3 cells, Jurkat cells

Primary antibody: ml161093(PSMD6 Antibody) at dilution 1/650

Secondary antibody: Goat anti rabbit IgG at 1/8000 dilution

Exposure time: 1 minute



ELISA

Recommended dilution: 2000-10000

联系电话: 4008-898-798, 021-61725725

联系QQ: 2881505695, 2881505696

邮箱: mlbio_cn@yeah.net

网址: www.mlbio.cn