

Anti-RBMY1A1 antibody

Cat. No.	ml220035
Package	25 µl/100 µl/200 µl
Storage	-20°C, pH7.4 PBS, 0.05% NaN ₃ , 40% Glycerol

Product overview

Description	Anti-RBMY1A1 rabbit polyclonal antibody
Applications	ELISA, WB
Immunogen	Fusion protein of human RBMY1A1
Reactivity	Human
Content	0.2 mg/ml
Host species	Rabbit
Ig class	Immunogen-specific rabbit IgG
Purification	Antigen affinity purification

Target information

Symbol	RBMY1A1
Full name	RNA binding motif protein, Y-linked, family 1, member A1
Synonyms	RBM; RBM1; RBM2; RBMY; YRRM1; YRRM2; RBMY1C
Swissprot	P0DJD3

Target Background

This gene encodes a protein containing an RNA-binding motif in the N-terminus and four SRGY (serine, arginine, glycine, tyrosine) boxes in the C-terminus. Multiple copies of this gene are found in the AZFb azoospermia factor region of chromosome Y and the encoded protein is thought to be involved in spermatogenesis. Most copies of this locus are pseudogenes, although six highly similar copies have full-length ORFs and are considered functional. Four functional copies of this gene are found within inverted repeat IR2; two functional copies of this gene are found in palindrome P3, along with two copies of PTPN13-like, Y-linked.

订购热线: 4008-898-798

Applications

Western blotting

Predicted band size: 56 kDa

Positive control: A549, Hela, PC3 and HepG2 cells

Recommended dilution: 500-2000

Gel: 6%SDS-PAGE

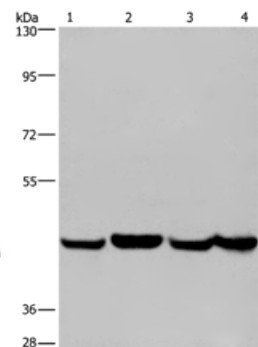
Lysate: 40 µg

Lane 1-4: A549 cells, Hela cells, PC3 cells, HepG2 cells

Primary antibody: ml220035(RBMY1A1 Antibody) at dilution 1/350

Secondary antibody: Goat anti rabbit IgG at 1/8000 dilution

Exposure time: 30 seconds



ELISA

Recommended dilution: 2000-5000

联系电话: 4008-898-798, 021-61725725

联系QQ: 2881505695, 2881505696

邮箱: mlbio_cn@yeah.net

网址: www.mlbio.cn