

Anti-AGTR1 antibody

Cat. No.	ml220200
Package	25 µl/100 µl/200 µl
Storage	-20°C, pH7.4 PBS, 0.05% NaN ₃ , 40% Glycerol

Product overview

Description	Anti-AGTR1 rabbit polyclonal antibody
Applications	ELISA, WB
Immunogen	Fusion protein of human AGTR1
Reactivity	Human, Rat
Content	0.2 mg/ml
Host species	Rabbit
Ig class	Immunogen-specific rabbit IgG
Purification	Antigen affinity purification

Target information

Symbol	AGTR1
Full name	angiotensin II receptor, type 1
Synonyms	AT1, AG2S, AT1B, AT1R, AT1AR, AT1BR, AT2R1, HAT1R, AGTR1A, AGTR1B, AT2R1A, AT2R1B
Swissprot	P30556

Target Background

Angiotensin II is a potent vasopressor hormone and a primary regulator of aldosterone secretion. It is an important effector controlling blood pressure and volume in the cardiovascular system. It acts through at least two types of receptors. This gene encodes the type 1 receptor which is thought to mediate the major cardiovascular effects of angiotensin II. This gene may play a role in the generation of reperfusion arrhythmias following restoration of blood flow to ischemic or infarcted myocardium. It was previously thought that a related gene, denoted as AGTR1B, existed; however, it is now believed that there is only one type 1 receptor gene in humans. Multiple alternatively spliced transcript variants have been reported for this gene.

订购热线: 4008-898-798

Applications

Western blotting

Predicted band size: 41 kDa

Positive control: 231 cells

Recommended dilution: 200-1000

Gel: 10% SDS-PAGE

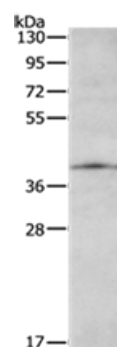
Lysate: 40 µg

Lane: 231 cells

Primary antibody: ml220200 (AGTR1 Antibody) at dilution 1/200

Secondary antibody: Goat anti rabbit IgG at 1/8000 dilution

Exposure time: 1 minute



ELISA

Recommended dilution: 1000-5000

联系电话: 4008-898-798, 021-61725725

联系QQ: 2881505695, 2881505696

邮箱: mlbio_cn@yeah.net

网址: www.mlbio.cn