

Anti-ANXA1 antibody

Cat. No.	ml220218
Package	25 µl/100 µl/200 µl
Storage	-20°C, pH7.4 PBS, 0.05% NaN ₃ , 40% Glycerol

Product overview

Description	Anti-ANXA1 rabbit polyclonal antibody
Applications	ELISA, WB
Immunogen	Fusion protein of human ANXA1
Reactivity	Human, Mouse, Rat
Content	0.3 mg/ml
Host species	Rabbit
Ig class	Immunogen-specific rabbit IgG
Purification	Antigen affinity purification

Target information

Symbol	ANXA1
Full name	Annexin A1
Synonyms	ANX1; LPC1
Swissprot	P04083

Target Background

Annexin I belongs to a family of Ca²⁺-dependent phospholipid binding proteins which have a molecular weight of approximately 35,000 to 40,000 and are preferentially located on the cytosolic face of the plasma membrane. Annexin I protein has an apparent relative molecular mass of 40 kDa, with phospholipase A2 inhibitory activity. Since phospholipase A2 is required for the biosynthesis of the potent mediators of inflammation, prostaglandins and leukotrienes, annexin I may have potential anti-inflammatory activity.

订购热线: 4008-898-798

Applications

Western blotting

Predicted band size: 39 kDa

Positive control: A431, NIH/3T3, HeLa, Jurkat and PC3 cells

Recommended dilution: 500-2000

Gel: 10% SDS-PAGE

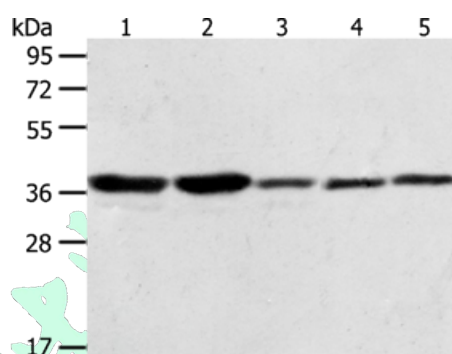
Lysate: 40 µg

Lane 1-5: A431 cells, NIH/3T3 cells, HeLa cells, Jurkat cells, PC3 cells

Primary antibody: ml220218 (ANXA1 Antibody) at dilution 1/400

Secondary antibody: Goat anti rabbit IgG at 1/8000 dilution

Exposure time: 20 seconds



ELISA

Recommended dilution: 2000-5000

联系电话: 4008-898-798, 021-61725725

联系QQ: 2881505695, 2881505696

邮箱: mlbio_cn@yeah.net

网址: www.mlbio.cn