

Anti-KRT23 antibody

| | |
|-----------------|---|
| Cat. No. | ml220242 |
| Package | 25 µl/100 µl/200 µl |
| Storage | -20°C, pH7.4 PBS, 0.05% NaN ₃ , 40% Glycerol |

Product overview

| | |
|---------------------|---------------------------------------|
| Description | Anti-KRT23 rabbit polyclonal antibody |
| Applications | ELISA, WB |
| Immunogen | Fusion protein of human KRT23 |
| Reactivity | Human, Mouse |
| Content | 0.2 mg/ml |
| Host species | Rabbit |
| Ig class | Immunogen-specific rabbit IgG |
| Purification | Antigen affinity purification |

Target information

| | |
|------------------|--|
| Symbol | KRT23 |
| Full name | keratin 23 (histone deacetylase inducible) |
| Synonyms | K23, CK23, HAIK1 |
| Swissprot | Q9C075 |

Target Background

Keratin, type I cytoskeletal 23 is a protein that in humans is encoded by the KRT23 gene. The protein encoded by this gene is a member of the keratin family. The keratins are intermediate filament proteins responsible for the structural integrity of epithelial cells and are subdivided into cytokeratins and hair keratins. The type I cytokeratins consist of acidic proteins which are arranged in pairs of heterotypic keratin chains. The type I cytokeratin genes are clustered in a region of chromosome 17q12-q21.

订购热线: 4008-898-798

Applications

Western blotting

Predicted band size: 48 kDa

Positive control: Human colon cancer tissue

Recommended dilution: 200-1000

Gel: 10% SDS-PAGE

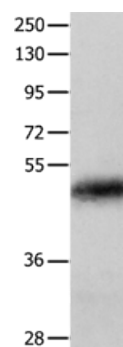
Lysate: 60 µg

Lane: Human colon cancer tissue

Primary antibody: ml220242(KRT23 Antibody) at dilution 1/100

Secondary antibody: Goat anti rabbit IgG at 1/8000 dilution

Exposure time: 1 minute



ELISA

Recommended dilution: 1000-2000

联系电话: 4008-898-798, 021-61725725

联系QQ: 2881505695, 2881505696

邮箱: mlbio_cn@yeah.net

网址: www.mlbio.cn