

## Anti-BACE1 antibody

<b>Cat. No.</b>	ml220305
<b>Package</b>	25 µl/100 µl/200 µl
<b>Storage</b>	-20°C, pH7.4 PBS, 0.05% NaN <sub>3</sub> , 40% Glycerol

### Product overview

<b>Description</b>	Anti-BACE1 rabbit polyclonal antibody
<b>Applications</b>	ELISA, WB
<b>Immunogen</b>	Fusion protein of human BACE1
<b>Reactivity</b>	Human, Mouse, Rat
<b>Content</b>	0.2 mg/ml
<b>Host species</b>	Rabbit
<b>Ig class</b>	Immunogen-specific rabbit IgG
<b>Purification</b>	Antigen affinity purification

### Target information

<b>Symbol</b>	BACE1
<b>Full name</b>	beta-site APP-cleaving enzyme 1
<b>Synonyms</b>	ASP2; BACE; HSPC104
<b>Swissprot</b>	P56817

### Target Background

Cerebral deposition of amyloid beta peptide is an early and critical feature of Alzheimer's disease. Amyloid beta peptide is generated by proteolytic cleavage of amyloid precursor protein (APP) by two proteases, one of which is the protein encoded by this gene. The encoded protein, a member of the peptidase A1 protein family, is a type I integral membrane glycoprotein and aspartic protease that is found mainly in the Golgi. Multiple transcript variants encoding different isoforms have been described for this gene.

订购热线: 4008-898-798

#### Applications

##### Western blotting

Predicted band size: 56 kDa

Positive control: Human fetal brain tissue

Recommended dilution: 500-2000

Gel: 8%SDS-PAGE

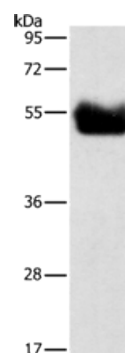
Lysate: 100 µg

Lane: Human fetal brain tissue

Primary antibody: ml220305(BACE1 Antibody) at dilution 1/500

Secondary antibody: Goat anti rabbit IgG at 1/8000 dilution

Exposure time: 1 minute



##### ELISA

Recommended dilution: 2000-5000

联系电话: 4008-898-798, 021-61725725

联系QQ: 2881505695, 2881505696

邮箱: [mlbio\\_cn@yeah.net](mailto:mlbio_cn@yeah.net)

网址: [www.mlbio.cn](http://www.mlbio.cn)