

Anti-BCL2L1 antibody

| | |
|-----------------|---|
| Cat. No. | ml220306 |
| Package | 25 µl/100 µl/200 µl |
| Storage | -20°C, pH7.4 PBS, 0.05% NaN ₃ , 40% Glycerol |

Product overview

| | |
|---------------------|--|
| Description | Anti-BCL2L1 rabbit polyclonal antibody |
| Applications | ELISA, WB |
| Immunogen | Fusion protein of human BCL2L1 |
| Reactivity | Human, Mouse, Rat |
| Content | 0.3 mg/ml |
| Host species | Rabbit |
| Ig class | Immunogen-specific rabbit IgG |
| Purification | Antigen affinity purification |

Target information

| | |
|------------------|---|
| Symbol | BCL2L1 |
| Full name | BCL2-like 1 |
| Synonyms | BCLX, BCL2L, BCLXL, BCLXS, Bcl-X, bcl-xL, bcl-xS, PPP1R52, BCL-XL/S |
| Swissprot | Q07817 |

Target Background

The protein encoded by this gene belongs to the BCL-2 protein family. BCL-2 family members form hetero- or homodimers and act as anti- or pro-apoptotic regulators that are involved in a wide variety of cellular activities. The proteins encoded by this gene are located at the outer mitochondrial membrane, and have been shown to regulate outer mitochondrial membrane channel (VDAC) opening. VDAC regulates mitochondrial membrane potential, and thus controls the production of reactive oxygen species and release of cytochrome C by mitochondria, both of which are the potent inducers of cell apoptosis. Two alternatively spliced transcript variants, which encode distinct isoforms, have been reported. The longer isoform acts as an apoptotic inhibitor and the shorter form acts as an apoptotic activator.

订购热线: 4008-898-798

Applications

Western blotting

Predicted band size: 26 kDa

Positive control: Human cervical cancer tissue

Recommended dilution: 500-2000

Gel: 12+15% SDS-PAGE

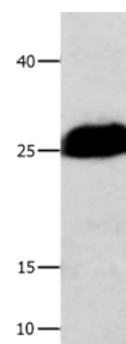
Lysate: 40 µg

Lane: Human cervical cancer tissue

Primary antibody: ml220306 (BCL2L1 Antibody) at dilution 1/300

Secondary antibody: Goat anti rabbit IgG at 1/8000 dilution

Exposure time: 10 seconds



ELISA

Recommended dilution: 1000-5000

联系电话: 4008-898-798, 021-61725725

联系QQ: 2881505695, 2881505696

邮箱: mlbio_cn@yeah.net

网址: www.mlbio.cn