

Anti-RPS27 antibody

Cat. No.	m1220011
Package	25 µl/100 µl/200 µl
Storage	-20°C, pH7.4 PBS, 0.05% NaN ₃ , 40% Glycerol

Product overview

Description	Anti-RPS27 rabbit polyclonal antibody
Applications	ELISA, WB, IHC
Immunogen	Fusion protein of human RPS27
Reactivity	Human, Mouse, Rat
Content	0.2 mg/ml
Host species	Rabbit
Ig class	Immunogen-specific rabbit IgG
Purification	Antigen affinity purification

Target information

Symbol	RPS27
Full name	ribosomal protein S27

Synonyms S27; MPS1; MPS-1

Swissprot P42677

Target Background

Ribosomes, the organelles that catalyze protein synthesis, consist of a small 40S subunit and a large 60S subunit. Together these subunits are composed of 4 RNA species and approximately 80 structurally distinct proteins. This gene encodes a ribosomal protein that is a component of the 40S subunit. The protein belongs to the S27E family of ribosomal proteins. It contains a C4-type zinc finger domain that can bind to zinc. The encoded protein has been shown to be able to bind to nucleic acid. It is located in the cytoplasm as a ribosomal component, but it has also been detected in the nucleus. Studies in rat indicate that ribosomal protein S27 is located near ribosomal protein S18 in the 40S subunit and is covalently linked to translation initiation factor eIF3. As is typical for genes encoding ribosomal proteins, there are multiple processed pseudogenes of this gene dispersed through the genome.

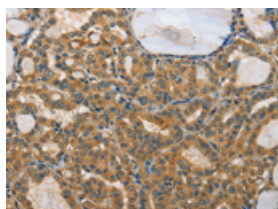
Applications

Immunohistochemistry

Predicted cell location: Cytoplasm

Positive control: Human thyroid cancer

Recommended dilution: 25-100

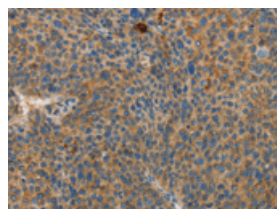


The image on the left is immunohistochemistry of paraffin-embedded Human thyroid cancer tissue using ml220011(RPS27 Antibody) at dilution 1/25, on the right is treated with fusion protein. (Original magnification: $\times 200$)

Predicted cell location: Cytoplasm

Positive control: Human liver cancer

Recommended dilution: 25-100



The image on the left is immunohistochemistry of paraffin-embedded Human liver cancer tissue using ml220011(RPS27 Antibody) at dilution 1/25, on the right is treated with fusion protein. (Original magnification: $\times 200$)

Western blotting

Predicted band size: 9 kDa

Positive control: Jurkat, K562 and Raji cells

Recommended dilution: 200-1000

Gel: 12%SDS-PAGE

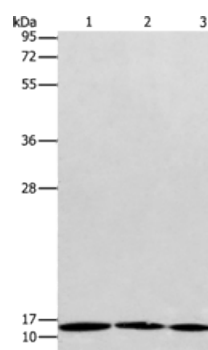
Lysate: 40 µg

Lane 1-3: Jurkat cells, K562 cells, Raji cells

Primary antibody: ml220011(RPS27 Antibody) at dilution 1/300

Secondary antibody: Goat anti rabbit IgG at 1/8000 dilution

Exposure time: 10 seconds



ELISA

Recommended dilution: 1000-2000

联系电话: 4008-898-798, 021-61725725

联系QQ: 2881505695, 2881505696

邮箱: mlbio_cn@yeah.net

网址: www.mlbio.cn