

Anti-PCNA antibody

Cat. No.	ml220014
Package	25 µl/100 µl/200 µl
Storage	-20°C, pH7.4 PBS, 0.05% NaN ₃ , 40% Glycerol

Product overview

Description	Anti-PCNA rabbit polyclonal antibody
Applications	ELISA, WB, IHC
Immunogen	Fusion protein of human PCNA
Reactivity	Human, Mouse, Rat
Content	0.7 mg/ml
Host species	Rabbit
Ig class	Immunogen-specific rabbit IgG
Purification	Antigen affinity purification

Target information

Symbol	PCNA
Full name	proliferating cell nuclear antigen

Synonyms ATLD2

Swissprot P12004

Target Background

The protein encoded by this gene is found in the nucleus and is a cofactor of DNA polymerase delta. The encoded protein acts as a homotrimer and helps increase the processivity of leading strand synthesis during DNA replication. In response to DNA damage, this protein is ubiquitinated and is involved in the RAD6-dependent DNA repair pathway. Two transcript variants encoding the same protein have been found for this gene. Pseudogenes of this gene have been described on chromosome 4 and on the X chromosome.

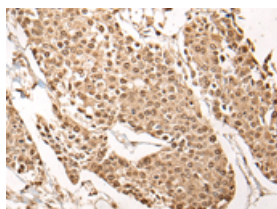
Applications

Immunohistochemistry

Predicted cell location: Nucleus

Positive control: Human prostate cancer

Recommended dilution: 25-100

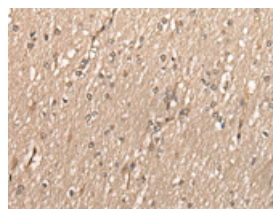


The image is immunohistochemistry of paraffin-embedded Human prostate cancer tissue using ml220014(PCNA Antibody) at dilution 1/35. (Original magnification: ×200)

Predicted cell location: Nucleus

Positive control: Human brain

Recommended dilution: 25-100



The image is immunohistochemistry of paraffin-embedded Human brain tissue using ml220014(PCNA Antibody) at dilution 1/35. (Original magnification: ×200)

Western blotting

Predicted band size: 29 kDa

Positive control: 293T and HEPG2 cell lysates

Recommended dilution: 500-2000

Gel: 12% SDS-PAGE

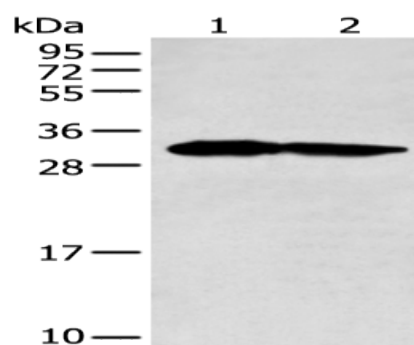
Lysate: 40 µg

Lane 1-2: 293T and HEPG2 cell lysates

Primary antibody: ml220014(PCNA Antibody) at dilution 1/400

Secondary antibody: Goat anti rabbit IgG at 1/8000 dilution

Exposure time: 30 seconds



mlbio 酶联生物
Good elisakit producers
订购热线: 4008-898-798

ELISA

Recommended dilution: 5000-10000

联系电话: 4008-898-798, 021-61725725

联系QQ: 2881505695, 2881505696

邮箱: mlbio_cn@yeah.net

网址: www.mlbio.cn