

Anti-YWHAE antibody

Cat. No.	ml220040
Package	25 µl/100 µl/200 µl
Storage	-20°C, pH7.4 PBS, 0.05% NaN ₃ , 40% Glycerol

Product overview

Description	Anti-YWHAE rabbit polyclonal antibody
Applications	ELISA, WB, IHC
Immunogen	Fusion protein of human YWHAE
Reactivity	Human, Mouse, Rat
Content	0.2 mg/ml
Host species	Rabbit
Ig class	Immunogen-specific rabbit IgG
Purification	Antigen affinity purification

Target information

Symbol	YWHAE
Full name	Tyrosine 3-monooxygenase/tryptophan 5-monooxygenase activation protein, epsilon

polypeptide

Synonyms MDS, MDCR, KCIP-1, 14-3-3E

Swissprot P62258

Target Background

This gene product belongs to the 14-3-3 family of proteins which mediate signal transduction by binding to phosphoserine-containing proteins. This highly conserved protein family is found in both plants and mammals, and this protein is 100% identical to the mouse ortholog. It interacts with CDC25 phosphatases, RAF1 and IRS1 proteins, suggesting its role in diverse biochemical activities related to signal transduction, such as cell division and regulation of insulin sensitivity. It has also been implicated in the pathogenesis of small cell lung cancer. Two transcript variants, one protein-coding and the other non-protein-coding, have been found for this gene.

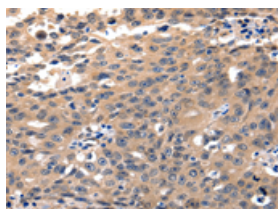
Applications

Immunohistochemistry

Predicted cell location: Cytoplasm

Positive control: Human ovarian cancer

Recommended dilution: 10-50

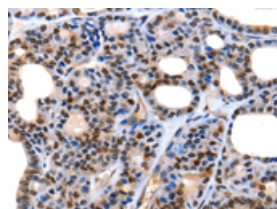


The image on the left is immunohistochemistry of paraffin-embedded Human ovarian cancer tissue using ml220040(YWHAE Antibody) at dilution 1/5, on the right is treated with fusion protein. (Original magnification: $\times 200$)

Predicted cell location: Cytoplasm

Positive control: Human thyroid cancer

Recommended dilution: 10-50



The image on the left is immunohistochemistry of paraffin-embedded Human thyroid cancer tissue using ml220040(YWHAE Antibody) at dilution 1/5, on the right is treated with fusion protein. (Original magnification: $\times 200$)

Western blotting

Predicted band size: 29 kDa

Positive control: Hela, 293T cells, Human fetal brain and Mouse brain tissue

Recommended dilution: 500-2000

Gel: 10%SDS-PAGE

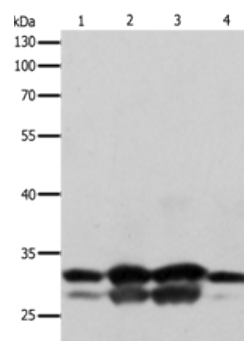
Lysate: 30 μ g

Lane 1-4: Hela cells, 293T cells, Human fetal brain tissue, Mouse brain tissue

Primary antibody: ml220040(YWHA E Antibody) at dilution 1/250

Secondary antibody: Goat anti rabbit IgG at 1/8000 dilution

Exposure time: 10 seconds



ELISA

Recommended dilution: 500-10000

联系电话: 4008-898-798, 021-61725725

联系QQ: 2881505695, 2881505696

邮箱: mlbio_cn@yeah.net

网址: www.mlbio.cn