

Anti-AADACL4 antibody

Cat. No.	ml161215
Package	25 µl/100 µl/200 µl
Storage	-20°C, pH7.4 PBS, 0.05% NaN ₃ , 40% Glycerol

Product overview

Description	Anti-AADACL4 rabbit polyclonal antibody
Applications	ELISA, WB
Immunogen	Synthetic peptide of human AADACL4
Reactivity	Human
Content	0.2 mg/ml
Host species	Rabbit
Ig class	Immunogen-specific rabbit IgG
Purification	Antigen affinity purification

Target information

Symbol	AADACL4
Full name	Arylacetamide deacetylase-like 4
Synonyms	
Swissprot	Q5VUY2

Target Background

Arylacetamide deacetylase-like 4 is a protein in humans that is encoded by the AADACL4 gene. It belongs to the 'GDXG' lipolytic enzyme family. The subcellular location of this protein in the membrane, it is single-pass type II membrane protein. It has signal-anchor, transmembrane and transmembrane helix domain. Function as Hydrolase.

订购热线: 4008-898-798

Applications

Western blotting

Predicted band size: 46 kDa

Positive control: 231 and A549 cells

Recommended dilution: 200-1000

Gel: 10% SDS-PAGE

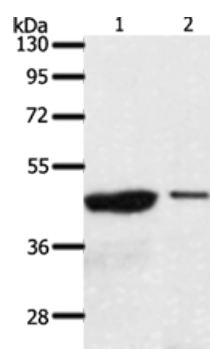
Lysate: 40 µg

Lane 1-2: 231 cells, A549 cells

Primary antibody: ml161215(AADACL4 Antibody) at dilution 1/100

Secondary antibody: Goat anti rabbit IgG at 1/8000 dilution

Exposure time: 30 minutes



ELISA

Recommended dilution: 1000-2000

联系电话: 4008-898-798, 021-61725725

联系QQ: 2881505695, 2881505696

邮箱: mlbio_cn@yeah.net

网址: www.mlbio.cn